

# ASSOCIATED WIRELINE SERVICE, Inc.

580-229-0731 • Box 906 • Healdton, Oklahoma 73438

FILING NO. \_\_\_\_\_

COMPANY \_\_\_\_\_

WELL \_\_\_\_\_

FIELD \_\_\_\_\_

COUNTY GARVIN STATE OK.

LOCATION \_\_\_\_\_

TYPE SERVICES:  
INJECTION PROFILE  
W/TEMP.

SEC \_\_\_\_\_ TWP \_\_\_\_\_ RGE \_\_\_\_\_

PERMANENT DATUM GL ELEV. 820

ELEV. K.B. 826

LOG MEASURED FROM 0 FT ABOVE PERM DATUM

D.F. 825

DRILLING MEASURED FROM KB GL 820

DATE 1/4/2012

RUN NO. ONE

TYPE LOG INJECTION PROFILE W/TEMP.

INJECTION PRESSURE 60#

DEPTH-DRILLER 990

RATE 320 BD.

DEPTH-LOGGED 925

FLUID WATER

BOTTOM LOGGED INTERVAL 925

ISOTOPE I-131

TOP LOGGED INTERVAL 700

8 DAY HALF LIFE

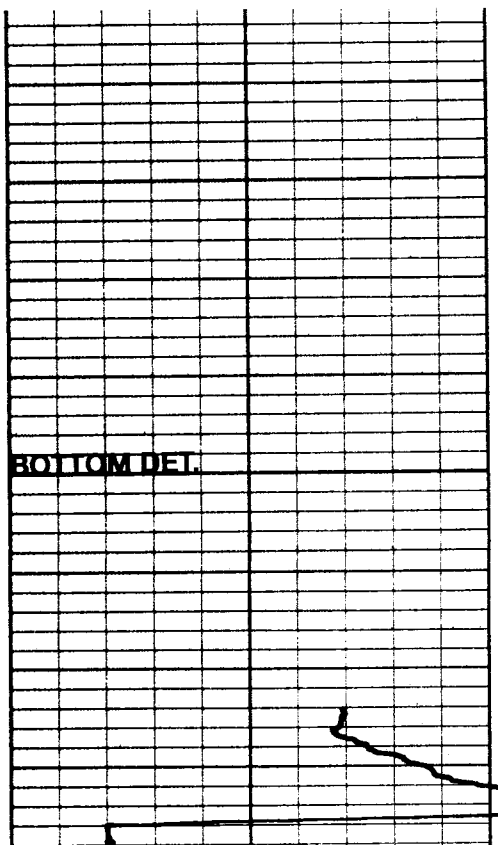
TYPE FLUID IN HOLE WATER

**CASING AND TUBING RECORD**

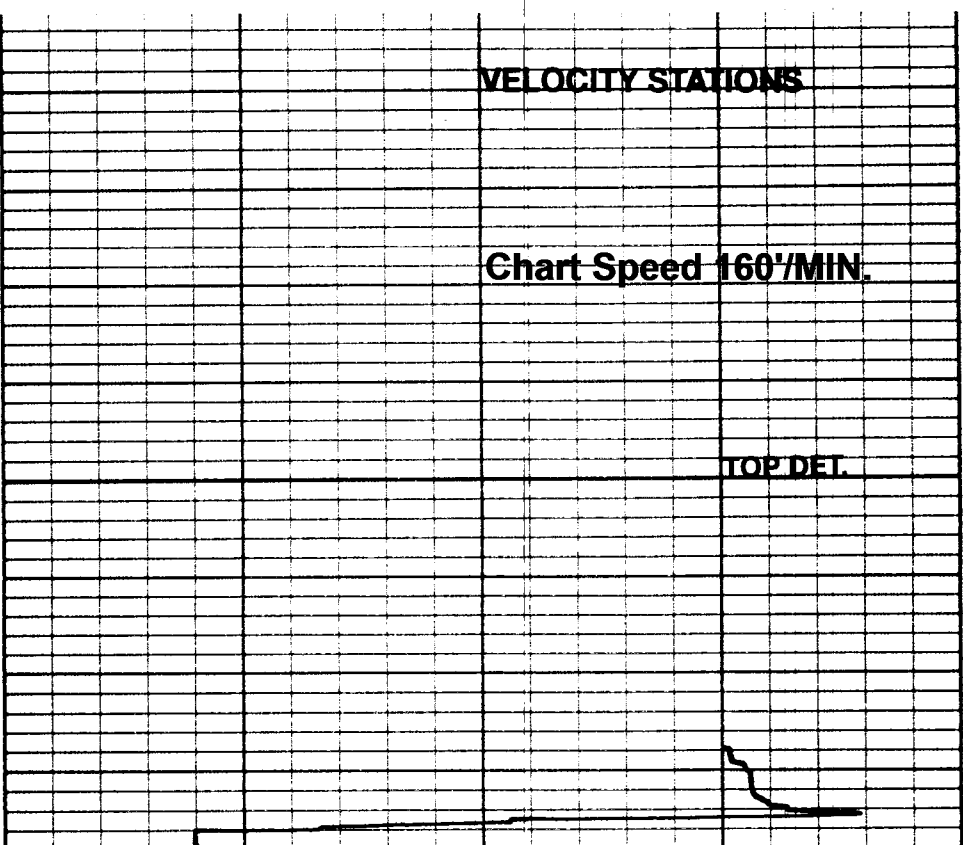
LEVEL	SIZE	WGT	TYPE	FROM	TO
RECORDING SPEED	<u>25/MIN</u>			<u>0</u>	<u>T.D.</u>
TOOL SIZE	<u>1 3/8"</u>		<u>TBG</u>	<u>0</u>	<u>863</u>
RECORDED BY	<u>STEARNS</u>				
WITNESSED BY					

PERFORATIONS: 870-74, 905-10, 936-50.

REMARKS: SEE NOTE BELOW.



TIME INCREASE

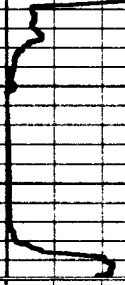
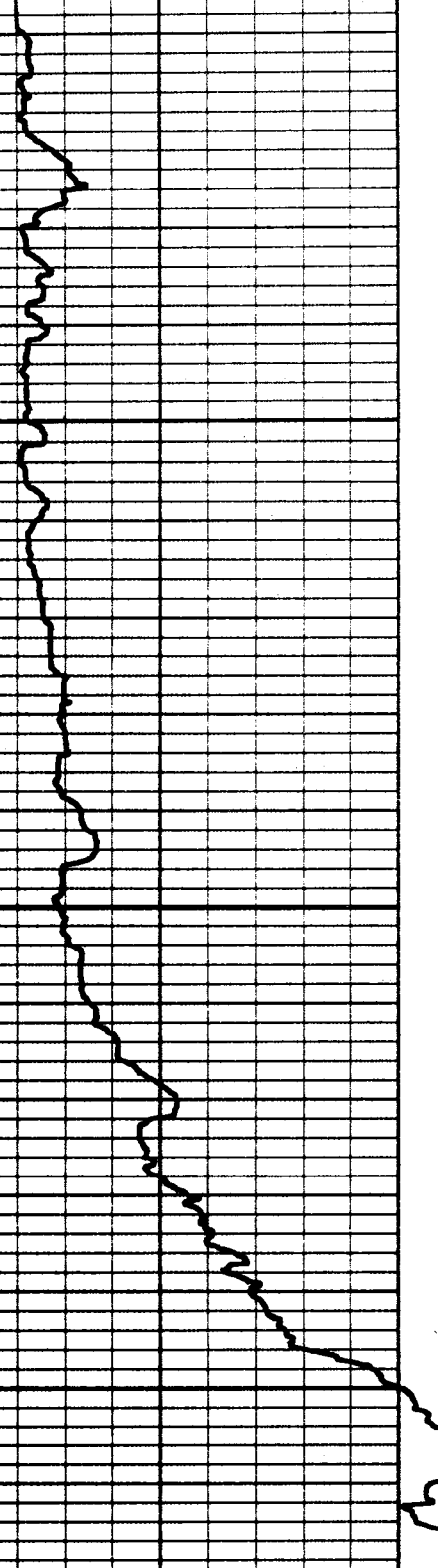
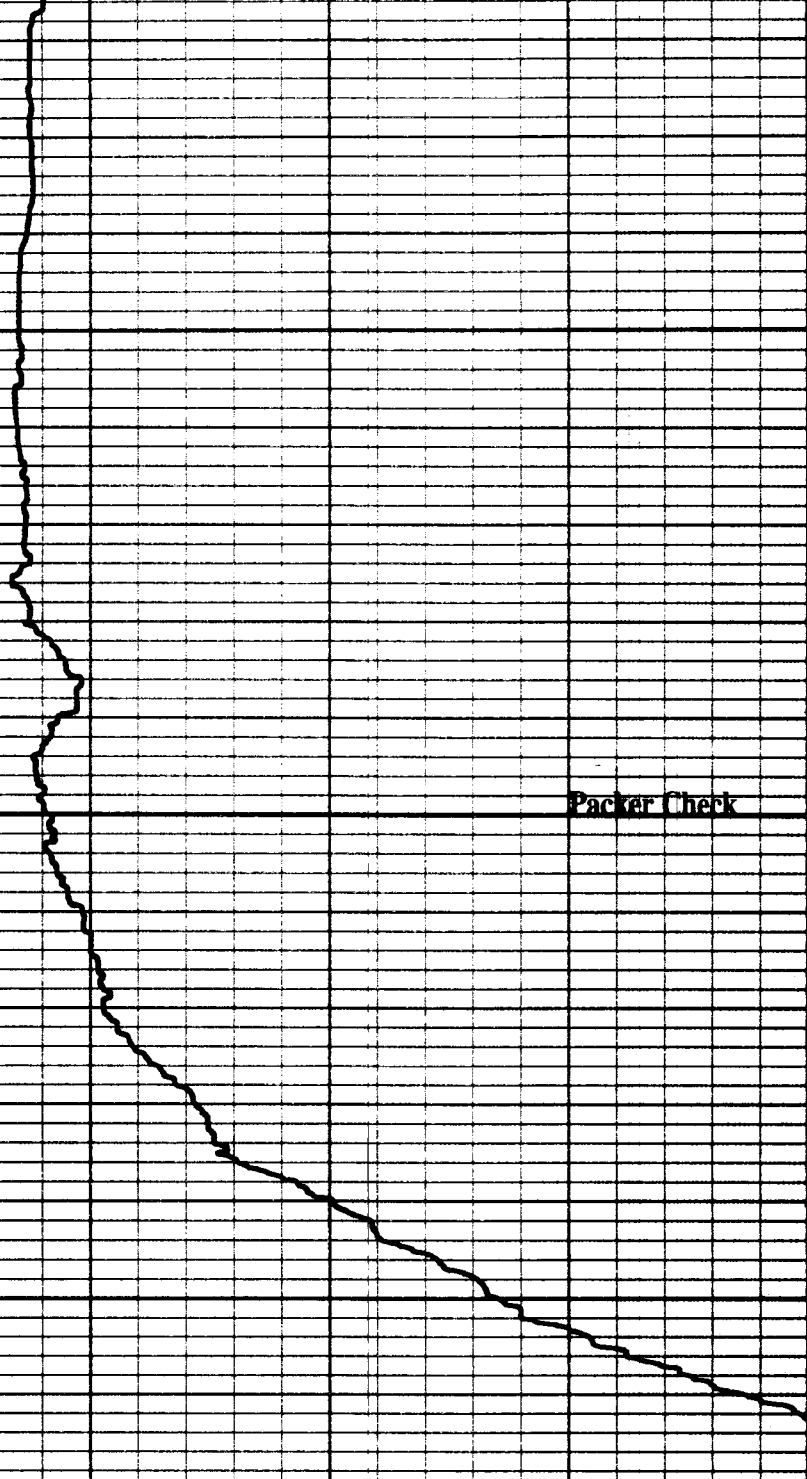


S

94

100

Packer Check



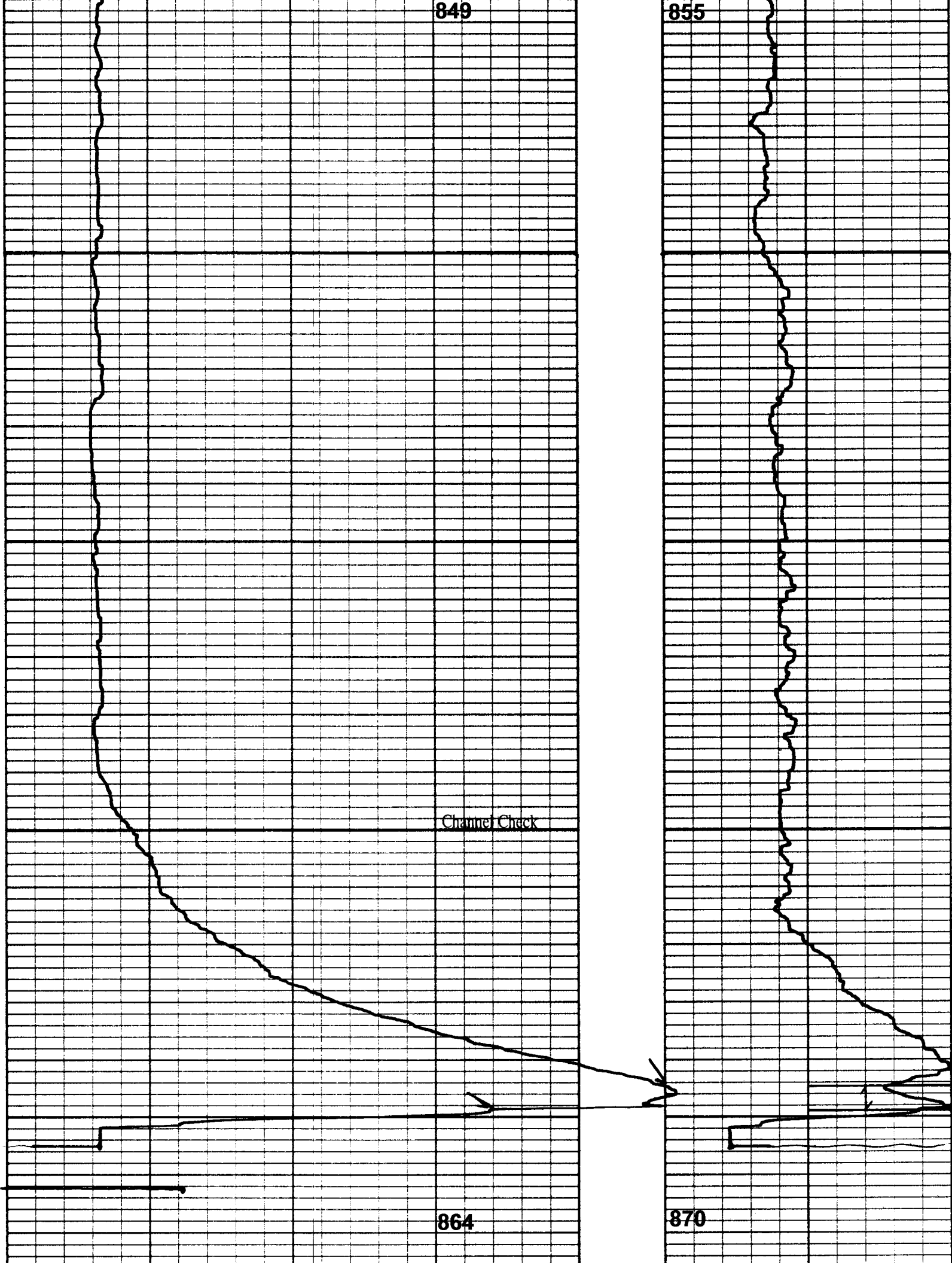
849

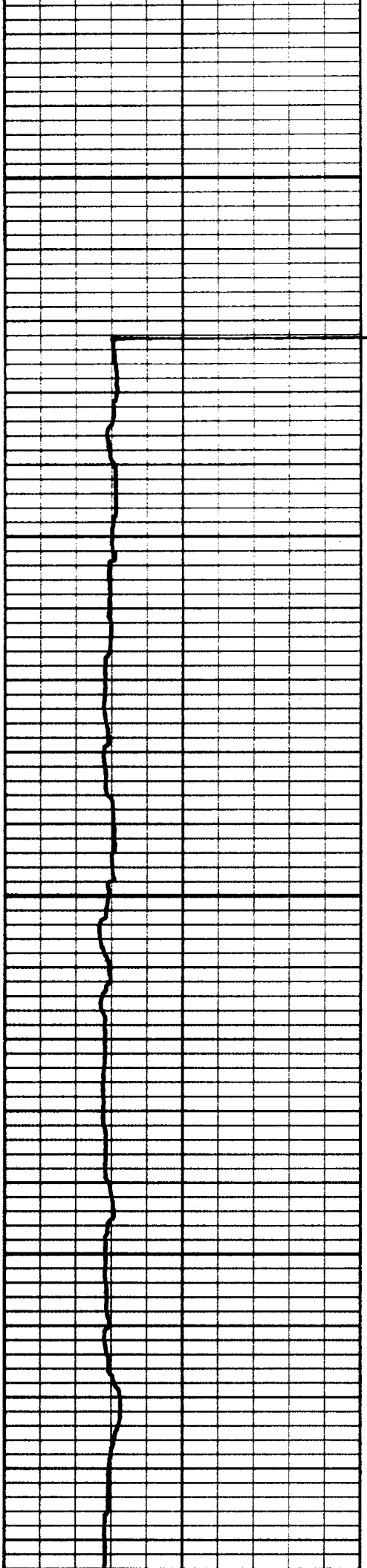
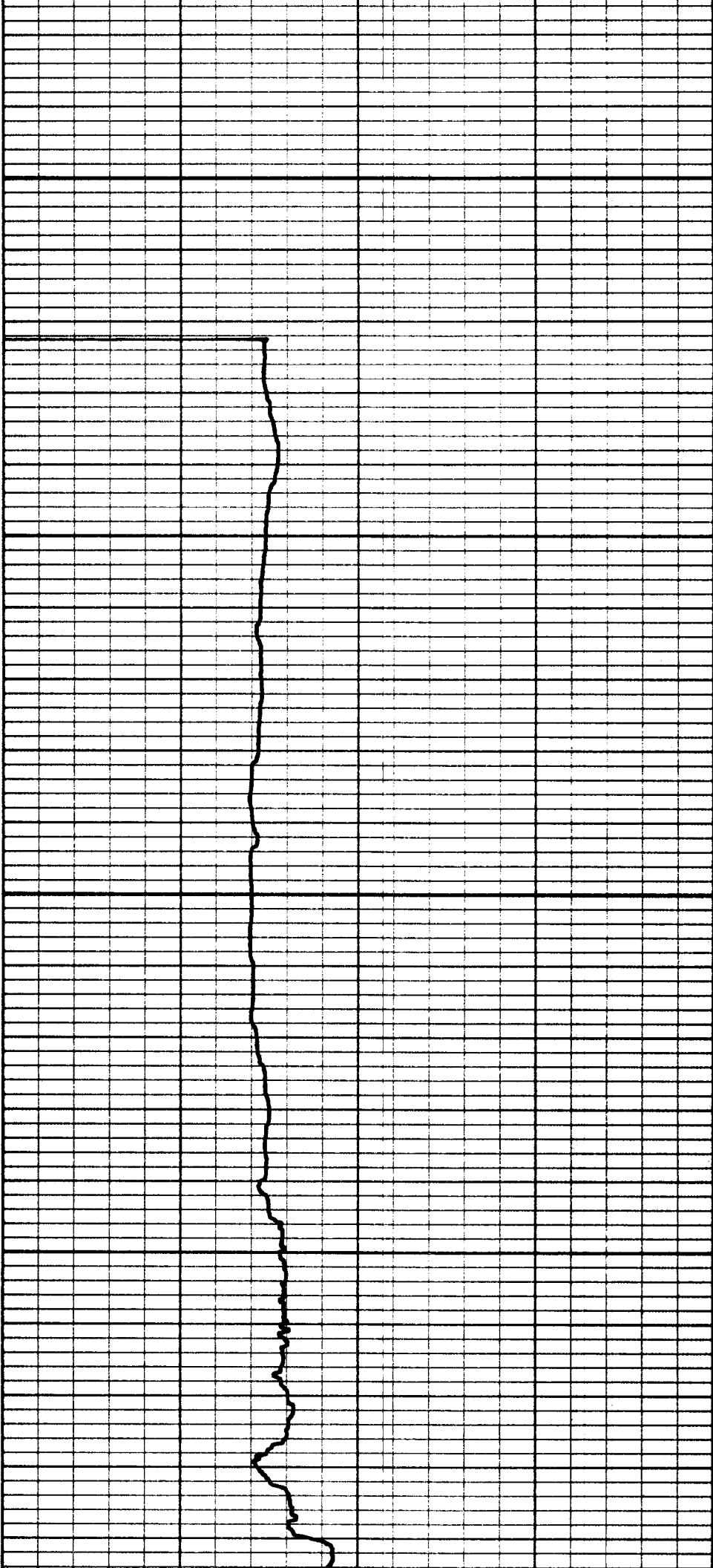
855

Channel Check

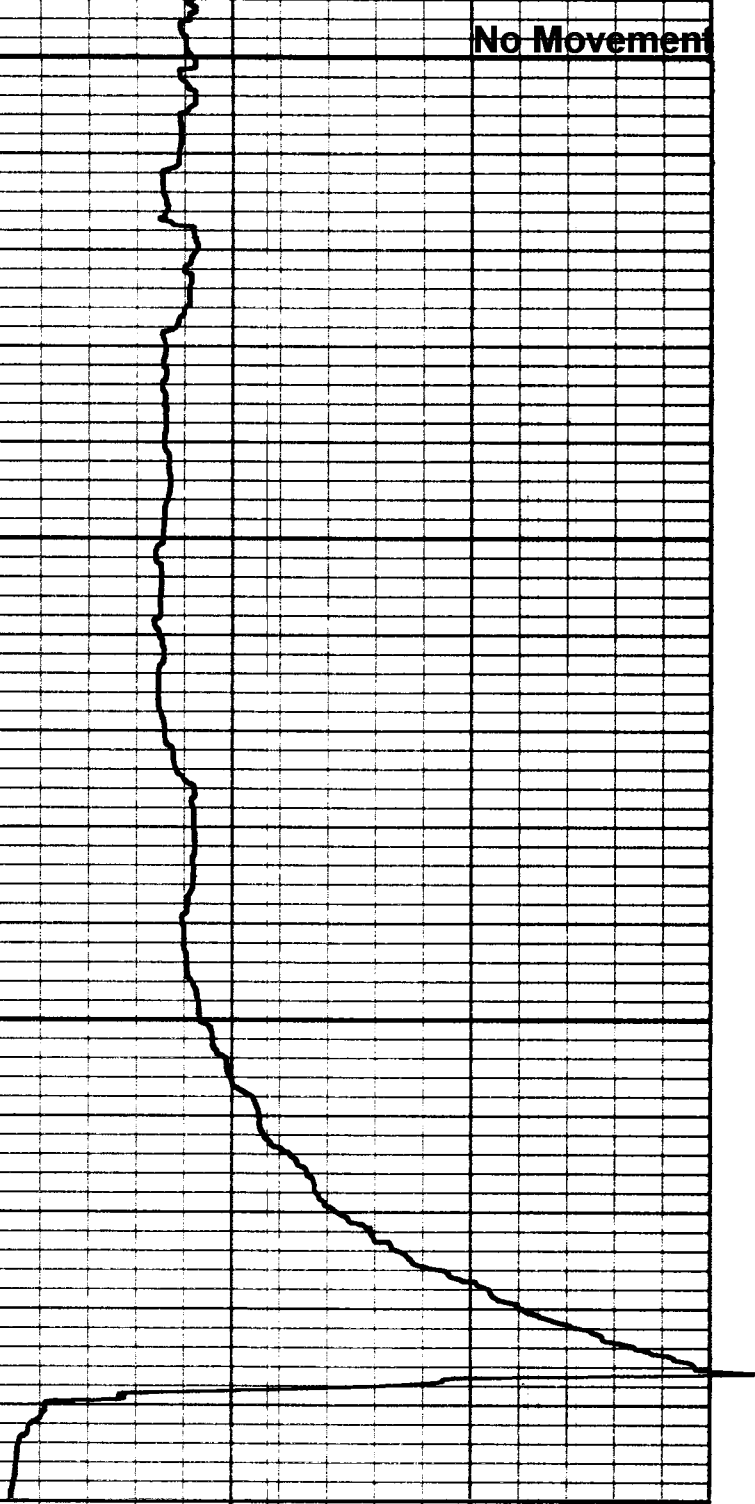
864

870

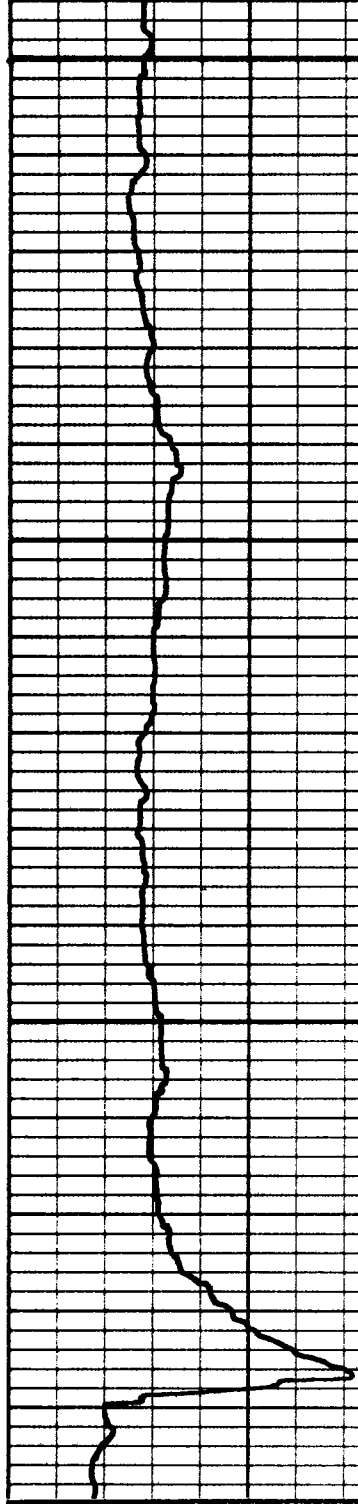




No Movement

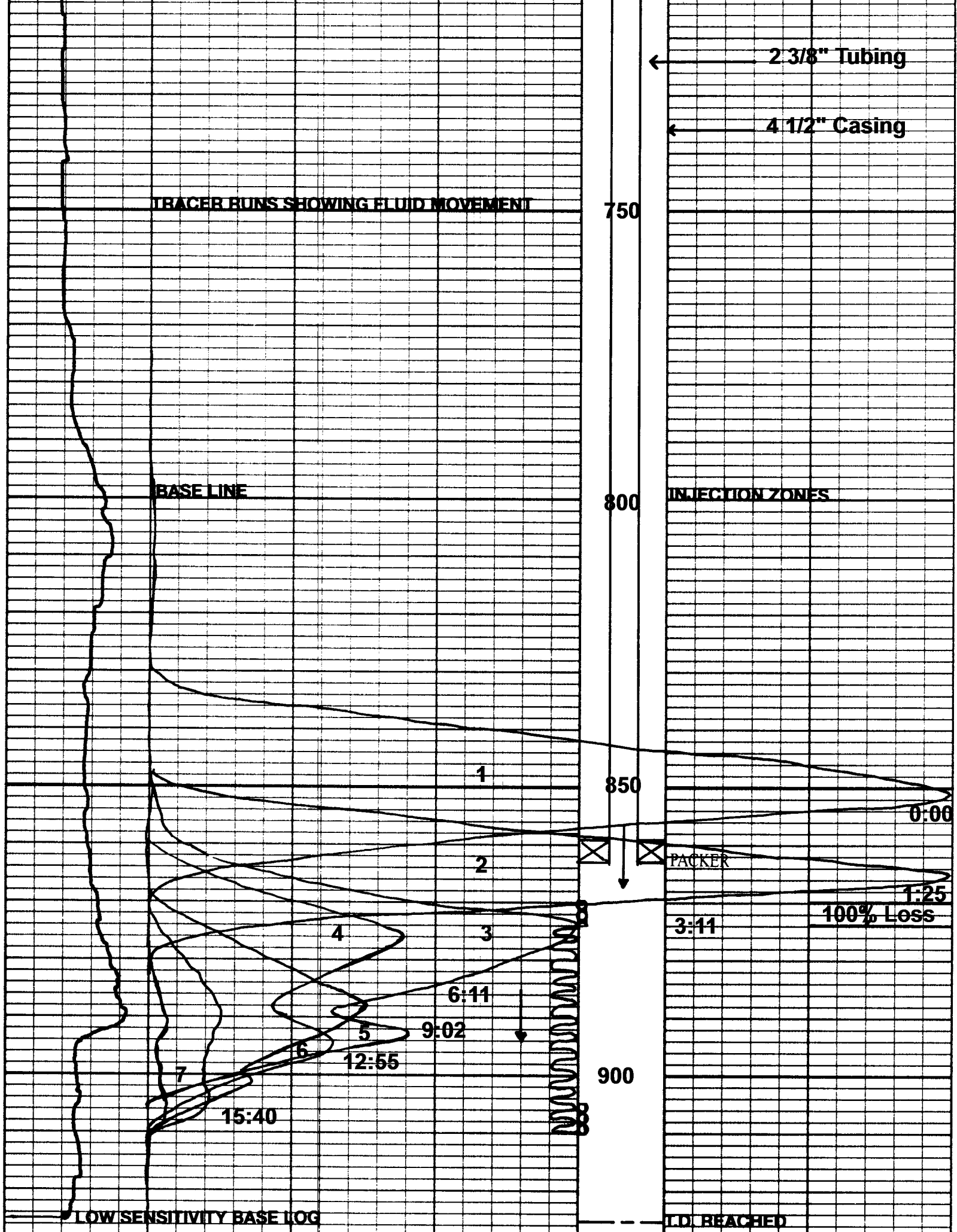


899



955

700



2 3/8" Tubing

4 1/2" Casing

TRACER RUNS SHOWING FLUID MOVEMENT

750

BASE LINE

800

INJECTION ZONES

1

850

0:00

2

PACKER

1:25

100% Loss

4

3

3:11

6:11

5

9:02

6

12:55

7

15:40

900

LOW SENSITIVITY BASE LOG

T.D. REACHED

TEMPERATURE INCREASES →

← TEMPERATURE LOG

700

750

800

← 2 3/8" Tubing

← 4 1/2" Casing

