

ASSOCIATED WIRELINE SERVICE, Inc.

580-229-0731 • Box 906 • Healdton, Oklahoma 73438

FILING NO. _____

COMPANY _____

WELL _____

FIELD _____

COUNTY _____ CARRIER _____ STATE _____ OK.

LOCATION _____

SEC _____ 26 _____ TWP _____ 1S _____ RGE _____ 3W _____

TYPE SERVICES
INJECTION PROFILE
W/TEMP.

PERMANENT DATUM _____ ELEV. _____

LOG MEASURED FROM _____ FT ABOVE PERM DATUM _____

DRILLING MEASURED FROM _____ ELEV. _____

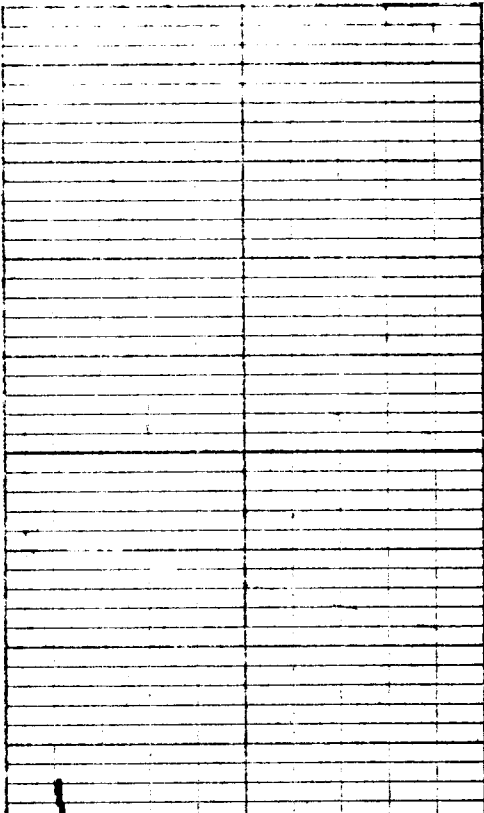
DATE _____ 1/17/2011 _____

GL _____

DATE	1/17/2011				
RUN NO.	ONE				
TYPE LOG	INJECTION PROFILE	W/TEMP		INJECTION	1100#
DEPTH-DRILLER	~ ~ ~ ~			PRESSURE	485 BD
DEPTH-LOGGED	3262			FLUID	WATER
BOTTOM LOGGED INTERVAL	3262			ISOTOPE	1-131
TOP LOGGED INTERVAL	2900			8 DAY HALF LIFE	
TYPE FLUID IN HOLE	WATER	CASING AND TUBING RECORD			
LEVEL	FULL	SIZE	WGT	TYPE	FROM TO
RECORDING SPEED	25/MIN.	5 1/2"	14#		0 3407
TOOL SIZE	1 3/8"	2 3/8"			0 2967
RECORDED BY	COX				
WITNESSED BY					

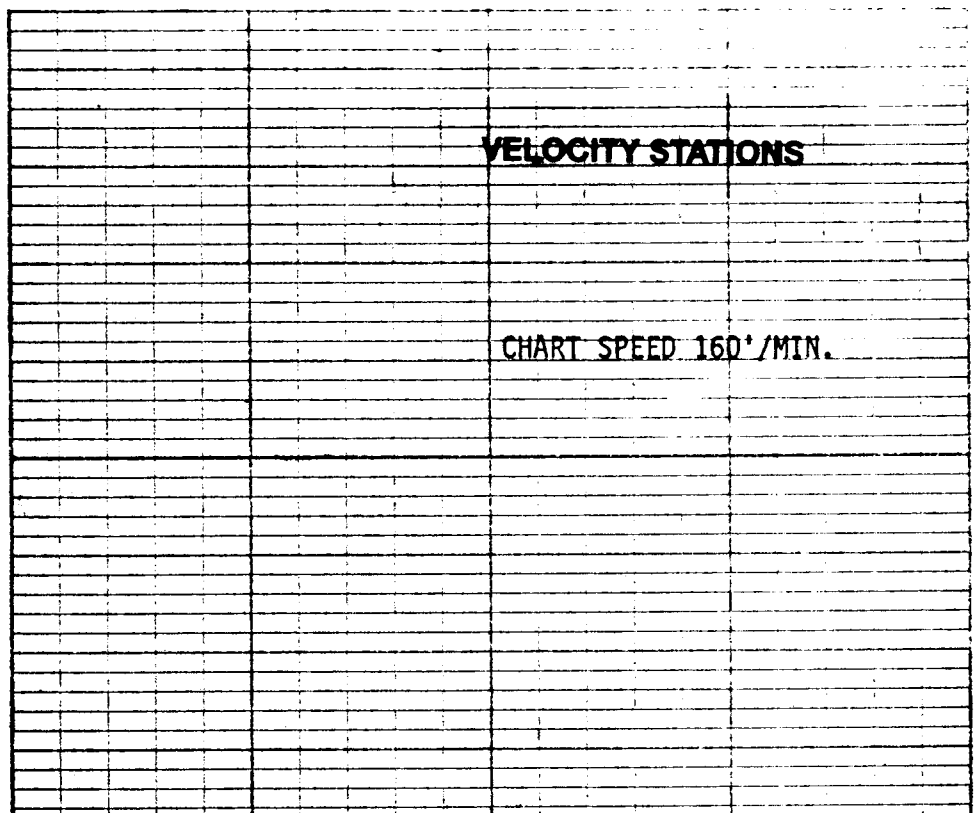
PERFORATIONS T-1: 3176-88, T-2: 3216-32, T-4: 3354-62

REMARKS SEE NOTE BELOW.

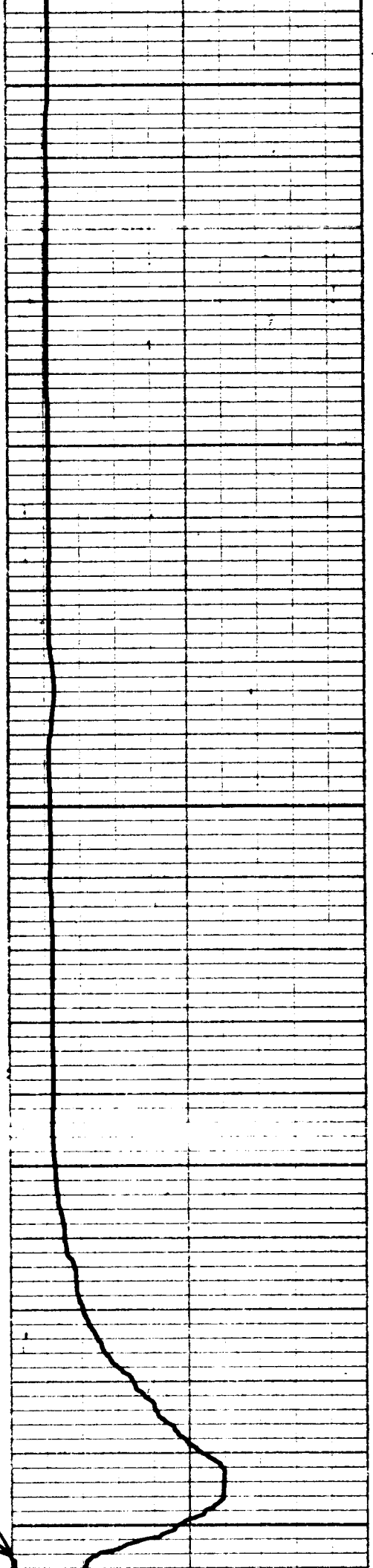
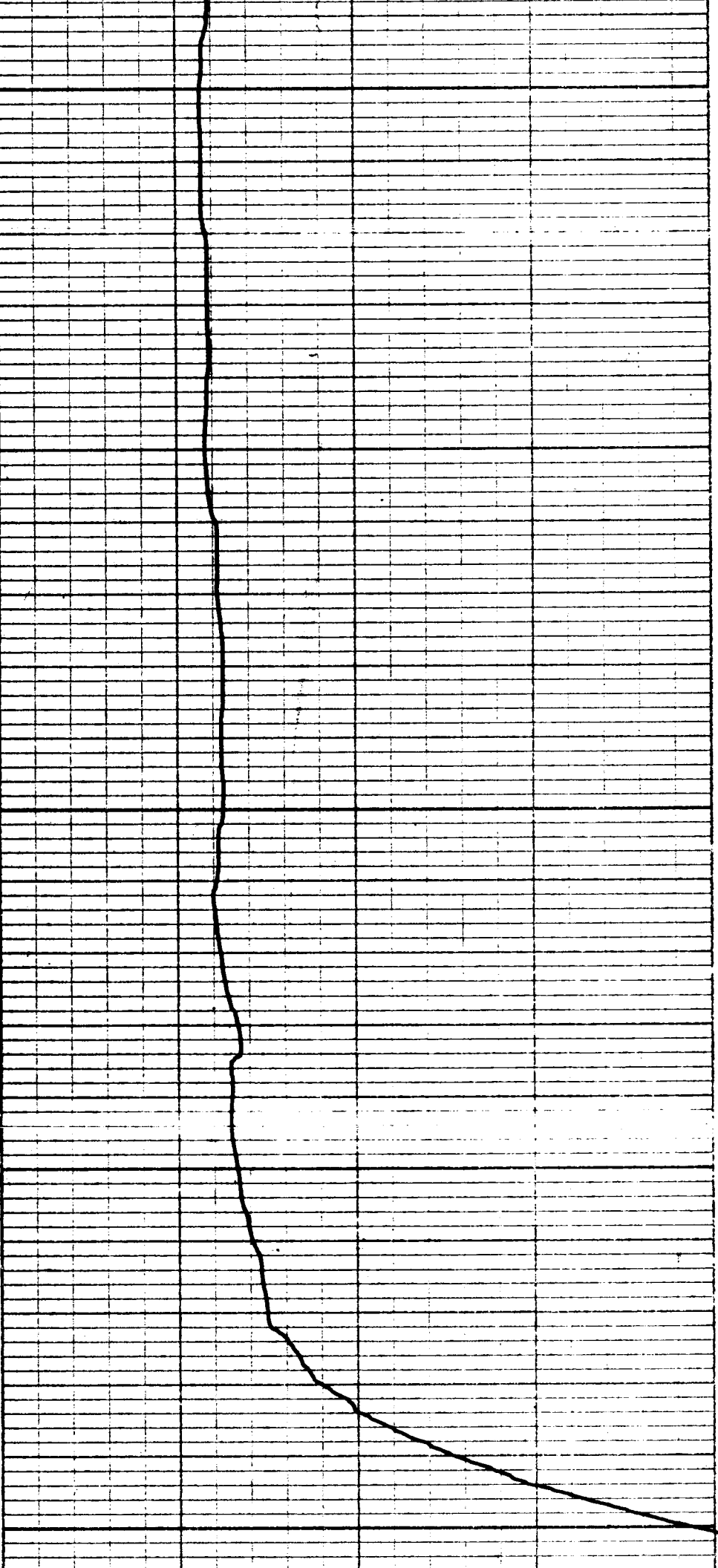


VELOCITY STATIONS

CHART SPEED 160' / MIN.



T - M - I - N - O - R - E - C - O - M - E



Packer Check

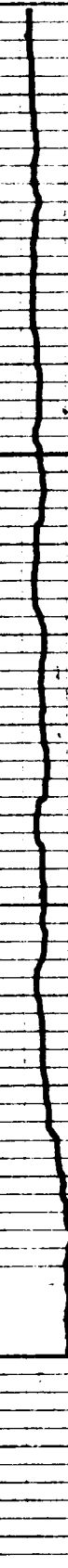
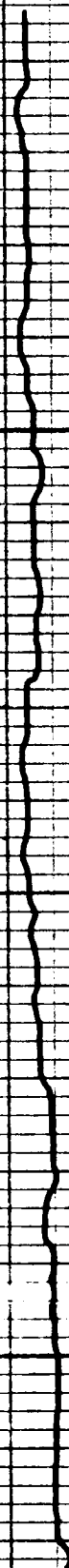
TOP DET.

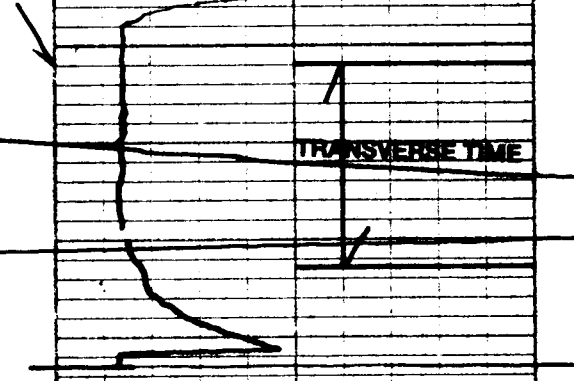
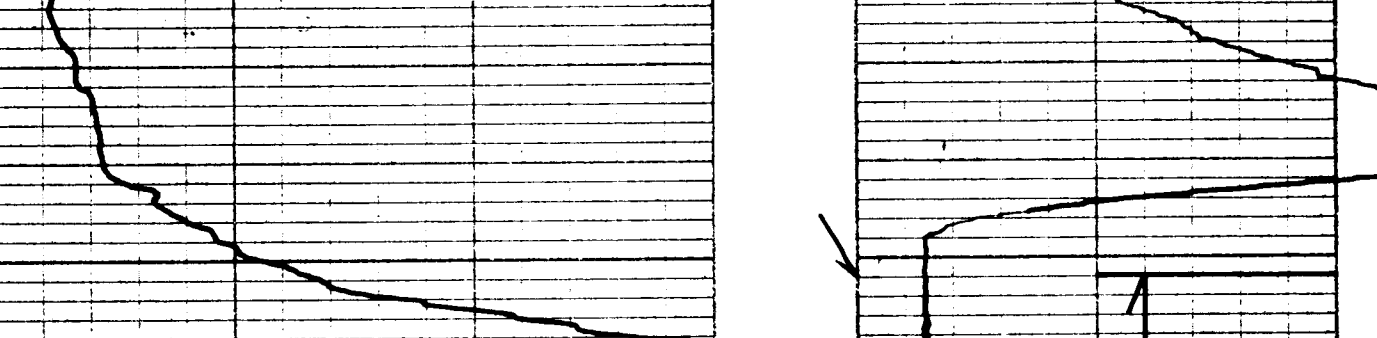
2949

BOTTOM DET.

2955

CHART SPEED 64' /MIN.

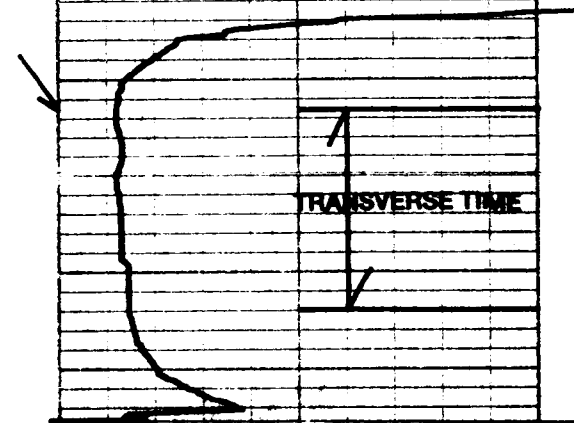
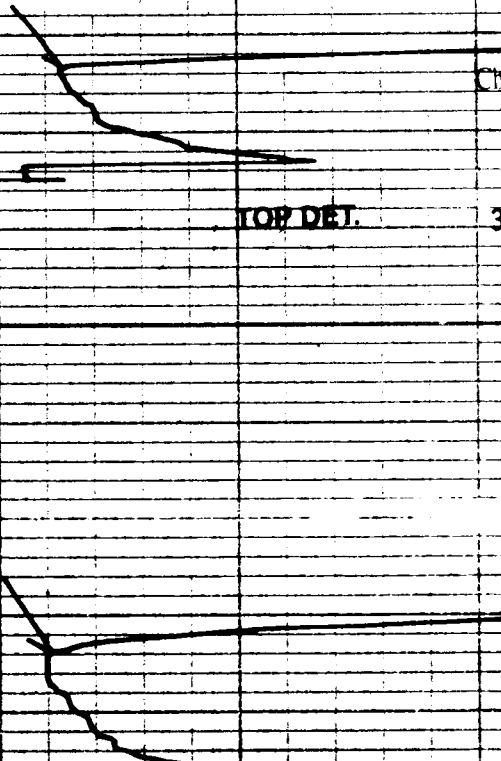




Channel Check

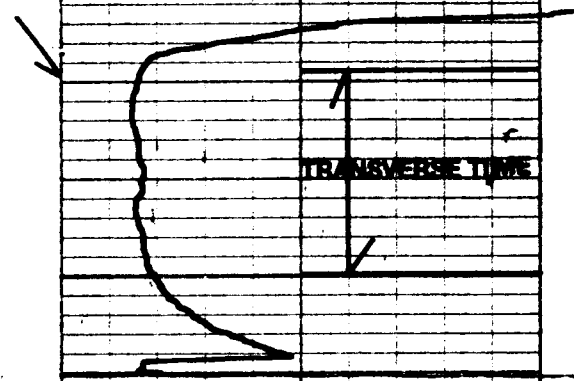
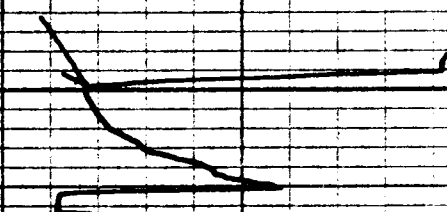
TOP DET. 3170

BOTTOM DET. 3176



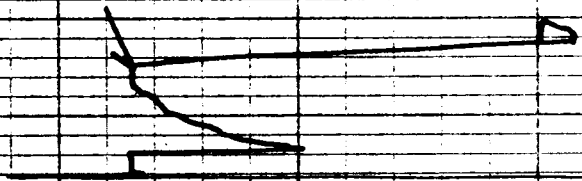
TOP DET. 3218

BOTTOM DET. 3224

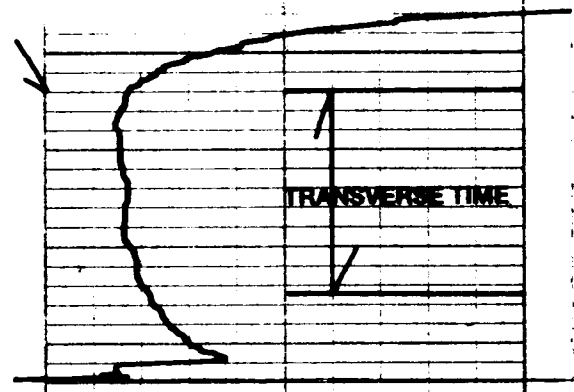


TOP DET. 3242

BOTTOM DET. 3248

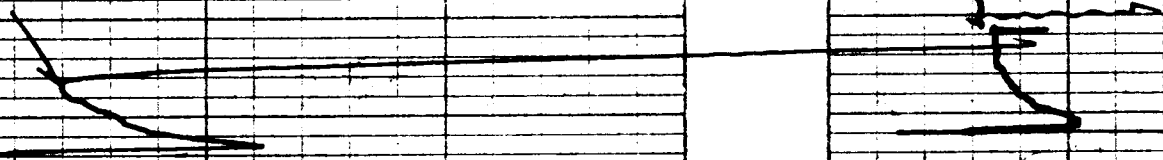


TOP DET. 3247



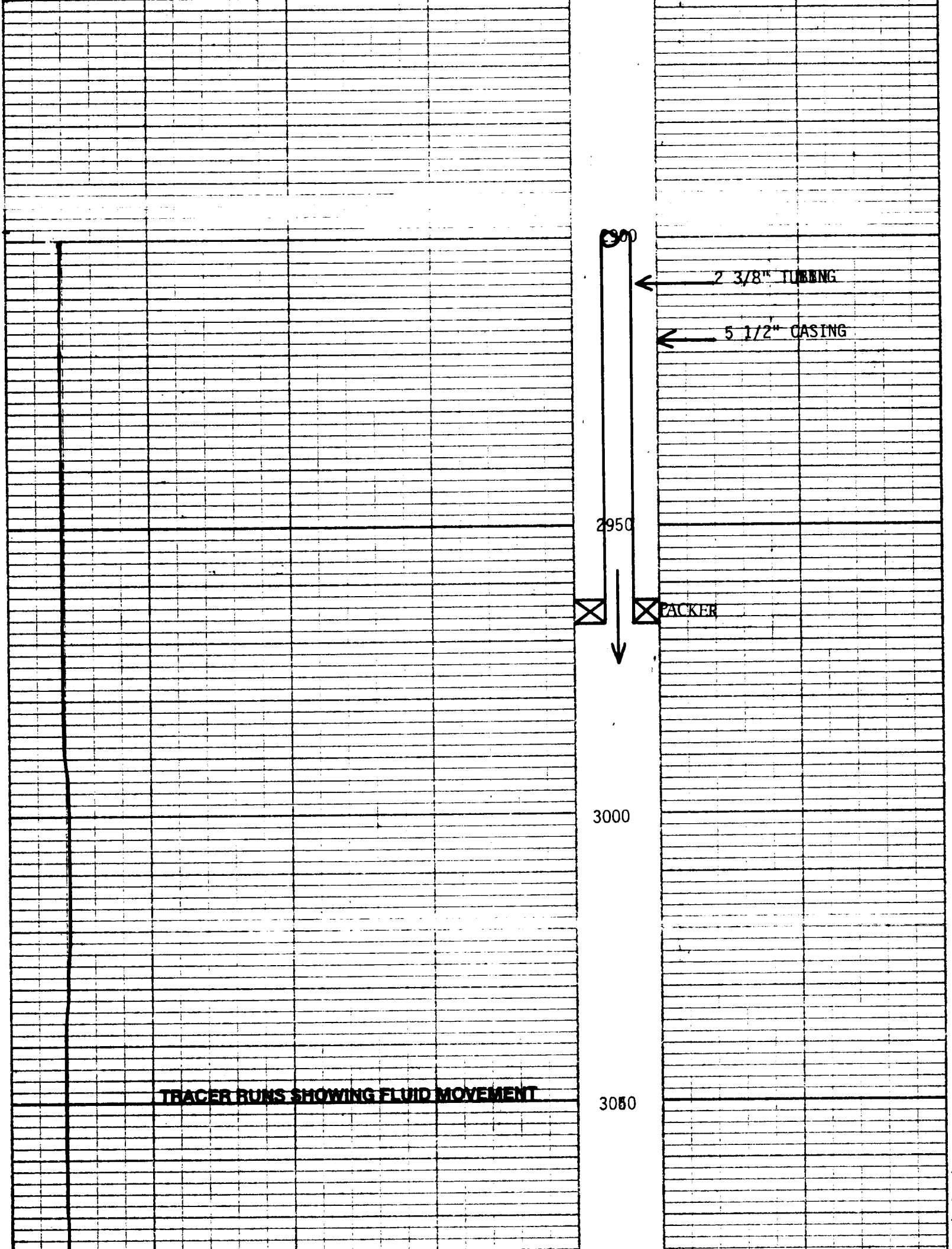
BOTTOM DET. 3253

NO MOVEMENT



TOP DET. 3252

BOTTOM DET. 3258



TRACER RUNS SHOWING FLUID MOVEMENT

2900

2 3/8" TUBING

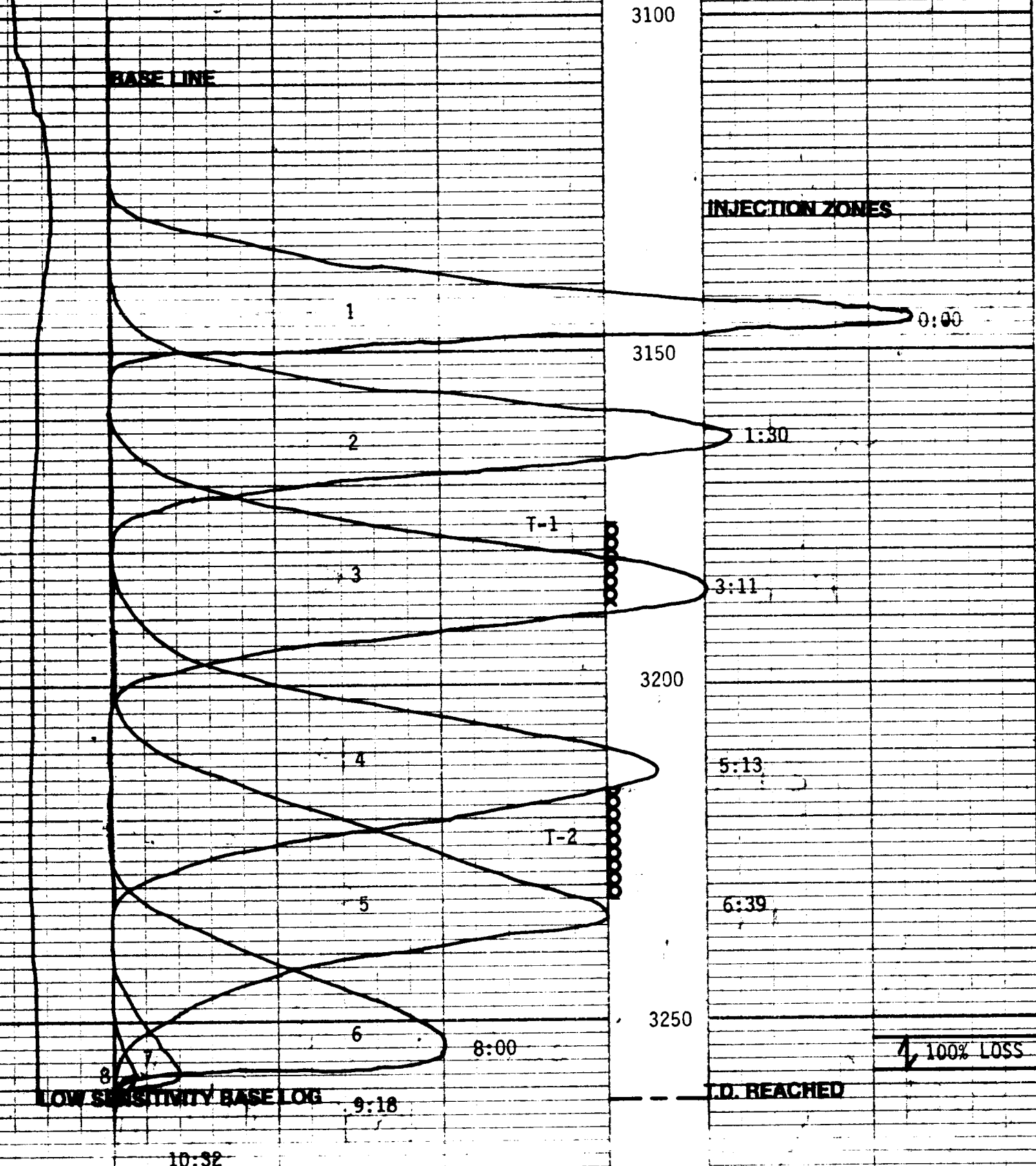
5 1/2" CASING

2950

PACKER

3000

3050



BASE LINE

3100

INJECTION ZONES

1

0:00

3150

2

1:30

T-1

3

3:11

3200

4

5:13

T-2

5

6:39

3250

6

8:00

100% LOSS

LOW SENSITIVITY BASE LOG

9:18

T.D. REACHED

8

10:32

TEMPERATURE INCREASES →

← TEMPERATURE LOG

2900

2 3/8" TUBING

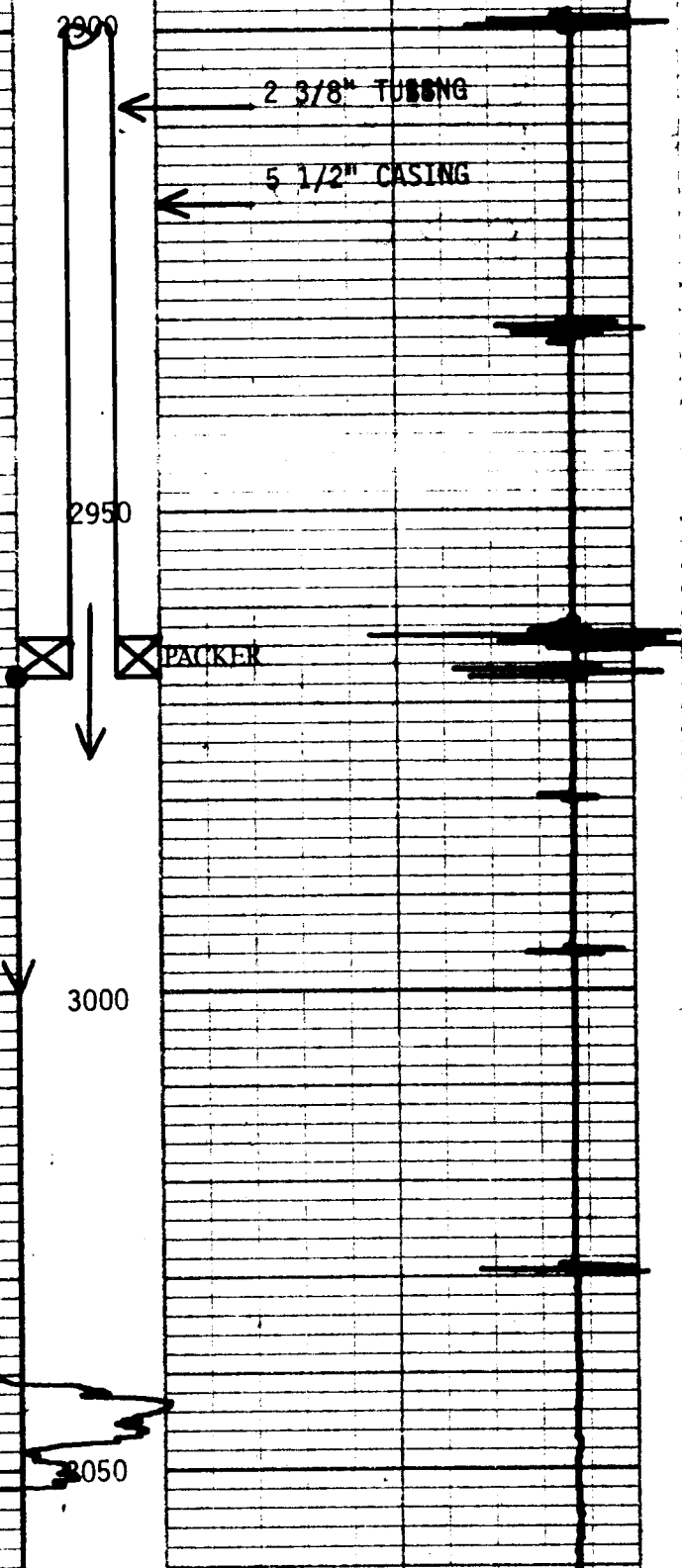
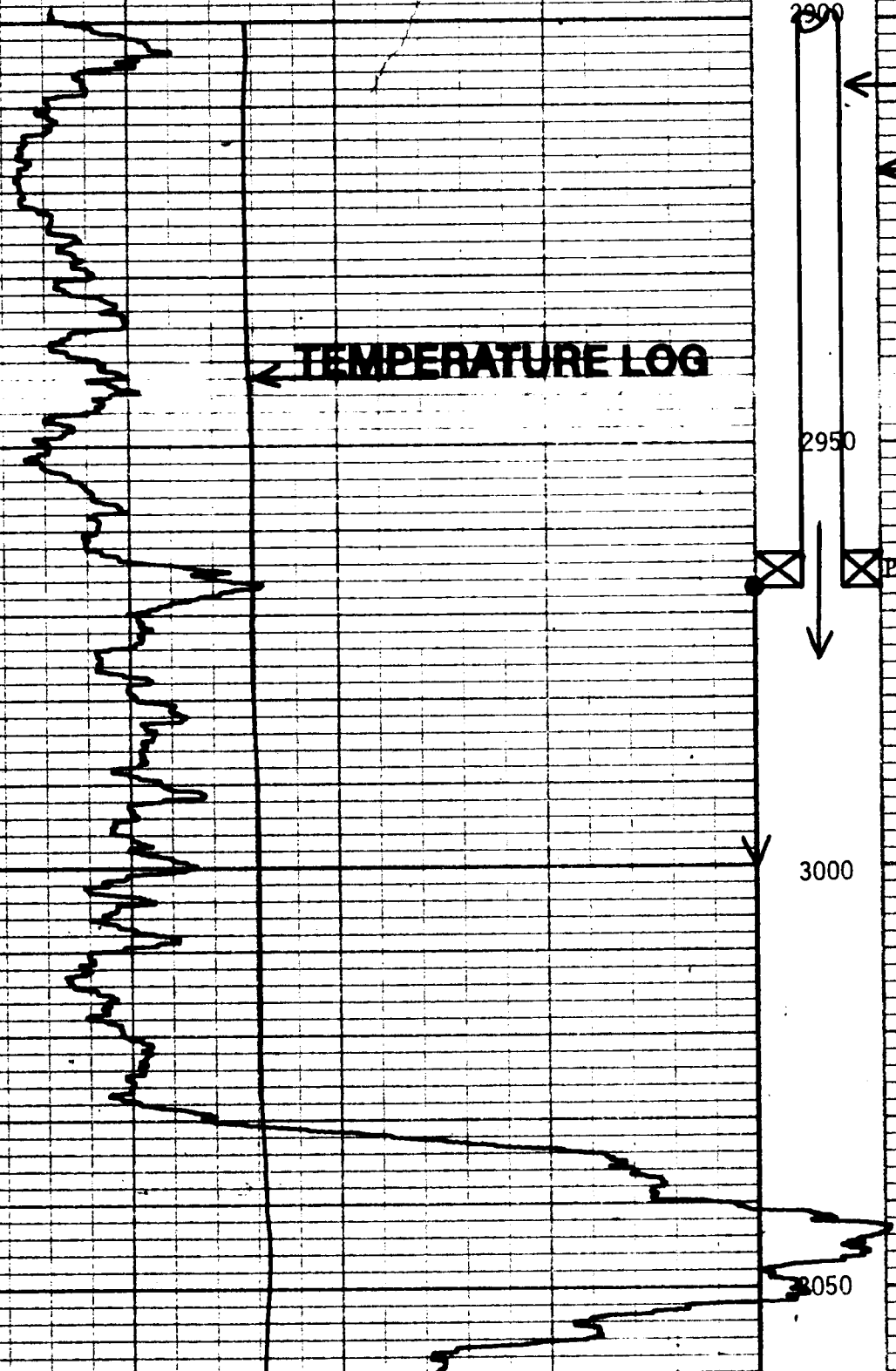
5 1/2" CASING

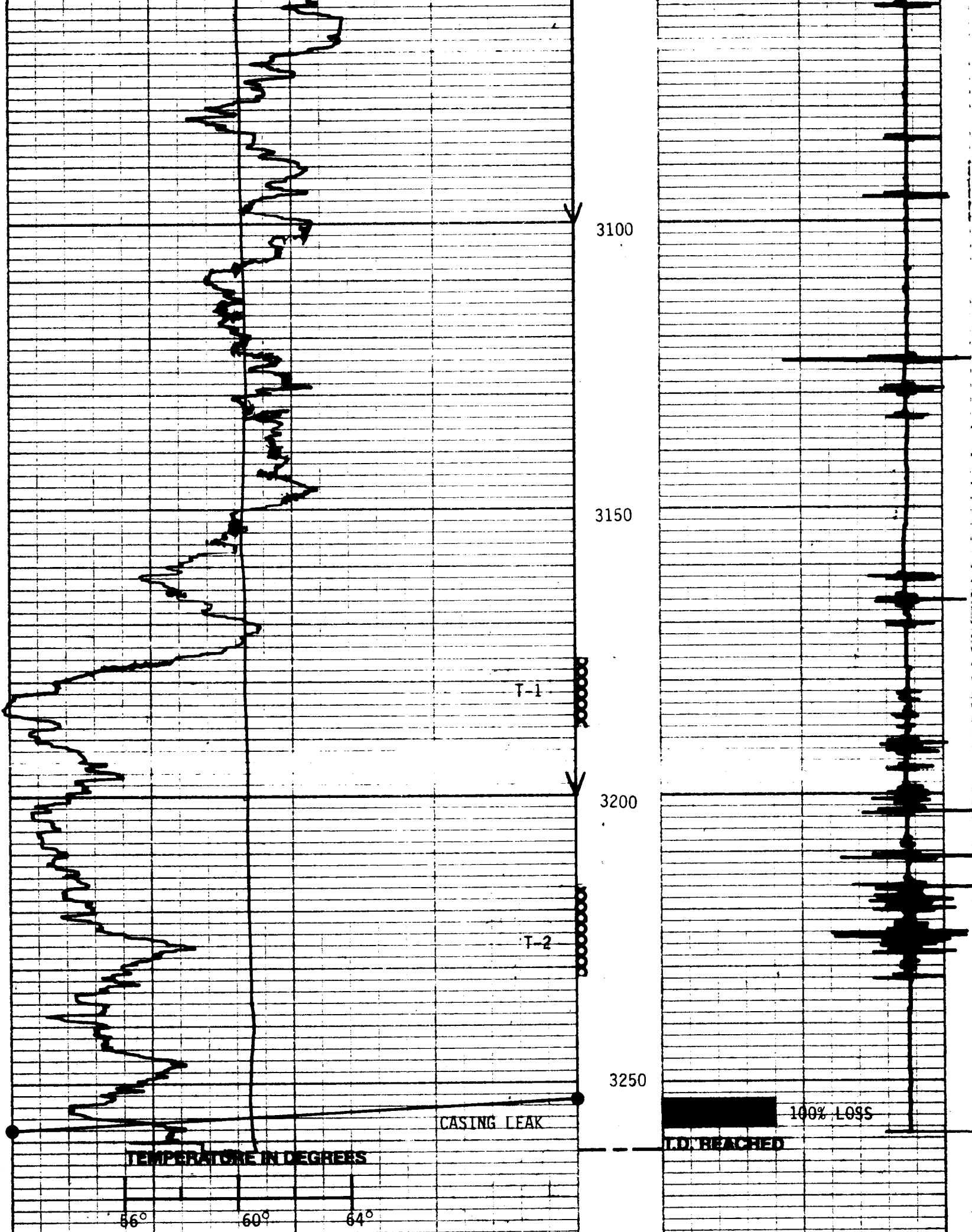
2950

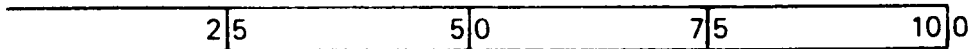
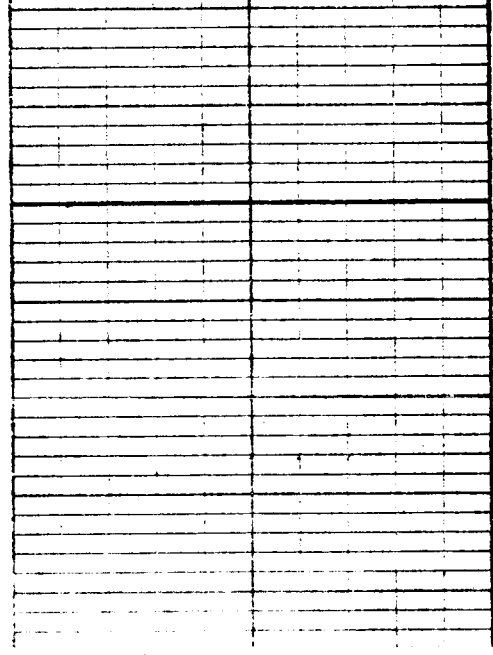
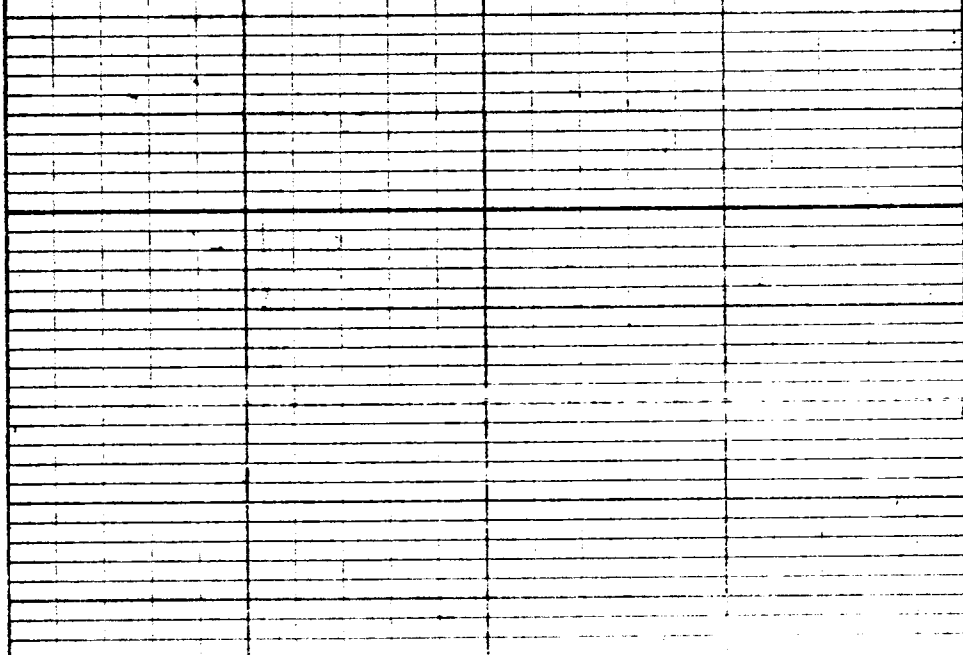
PACKER

3000

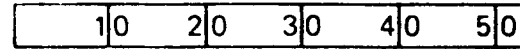
3050







PERCENT OF INPUT



PERCENT PER FOOT

———— GAMMA LOG

----- R/A FOLLOW UP TRACER

————> RADIO ACTIVITY INCREASES



PERFORATIONS FROM CUSTOMERS RECORDS



CHANNEL

—| SLOTS

CARTER CO., OK.

1/17/2011

Sta. No.	Rate Bbls. Day	Depth. Interval	Capacity of Interval Bbls.	Injection Volume to Fill Interval Bbls.	Percent of Fluid Going Below Base of Interval	Percent of Fluid Lost in Interval	Press P.S.I.
1	485	2967-3253	6.9784	6.9784	100	0	1100
2	"	3253-3258	0.1220	00	0	100	"

NOTE:

SURVEY INDICATES 100% FLUID LOSS OUT CASING LEAK OR UNREPORTED PERFS @ 3253-3258.

