

ASSOCIATED WIRELINE SERVICE, Inc.

580-229-0731 · Box 906 · Healdton, Oklahoma 73438

FILING NO. _____

COMPANY _____
 WELL _____
 FIELD _____
 COUNTY STEPHENS STATE OK.

LOCATION _____
 TYPE SERVICES: **INJECTION PROFILE**
 SEC 2 TWP 2S RGE 5W

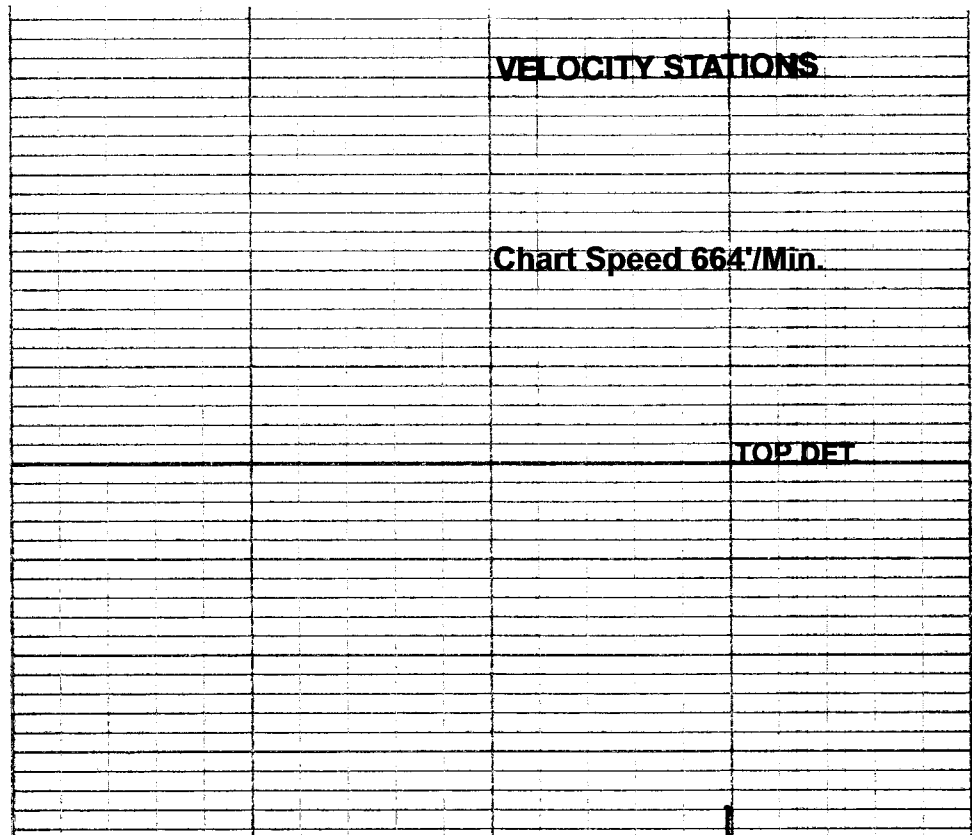
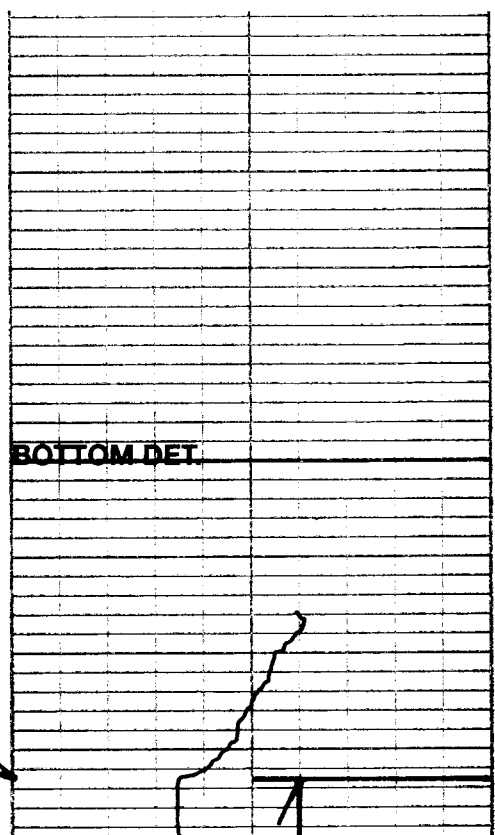
PERMANENT DATUM GL ELEV. _____
 LOG MEASURED FROM GL FT. ABOVE PERM. DATUM _____
 D.F. _____

DRILLING MEASURED FROM GL DATE 10/19/2011
 RUN NO. ONE INJECTION PROFILE _____
 TYPE LOG _____ PRESSURE 220#
 DEPTH-DRILLER 710 RATE 661 B.D.
 DEPTH-LOGGED 551 FLUID WATER
 BOTTOM LOGGED INTERVAL 551 ISOTOPE I-131
 TOP LOGGED INTERVAL 200 DAY HALF LIFE 8

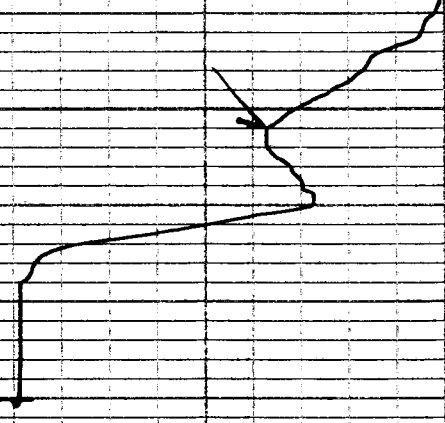
CASING AND TUBING RECORD			
LEVEL	SIZE	WGT	TYPE
RECORDING SPEED	<u>25/MIN.</u>	<u>14#</u>	<u>CSG</u>
TOOL SIZE	<u>1 3/8"</u>		<u>TBG</u>
RECORDED BY	<u>CALLIS</u>		
WITNESSED BY			

PERFORATIONS: 354-62, 393-402, 417-28, 602-16, 632-38, 650-70.

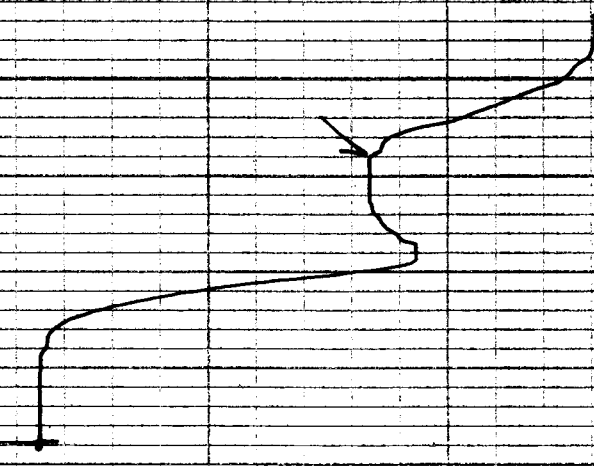
REMARKS: SEE NOTE BELOW.



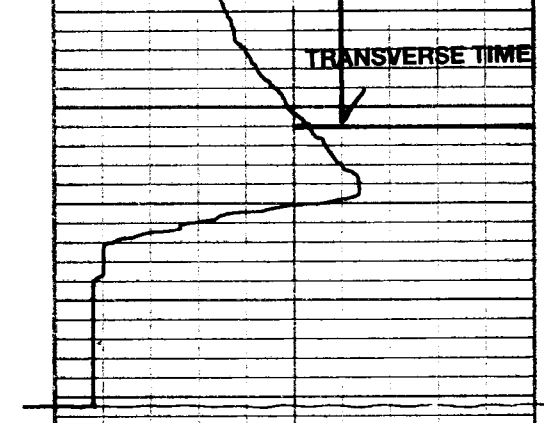
C
E
S



94

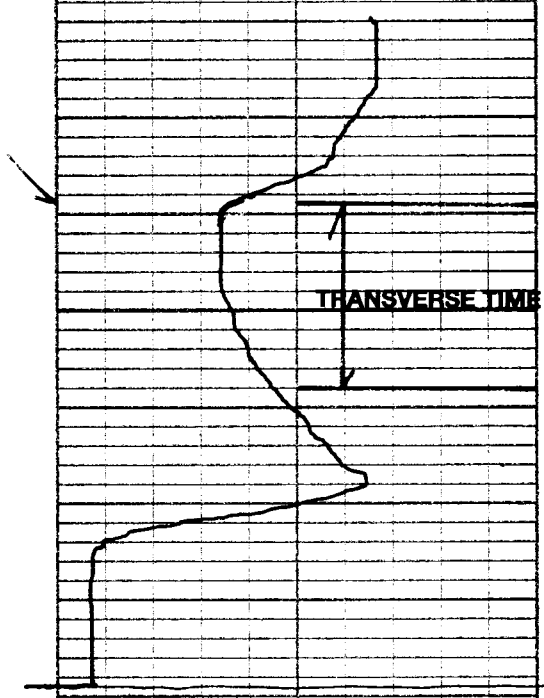


359



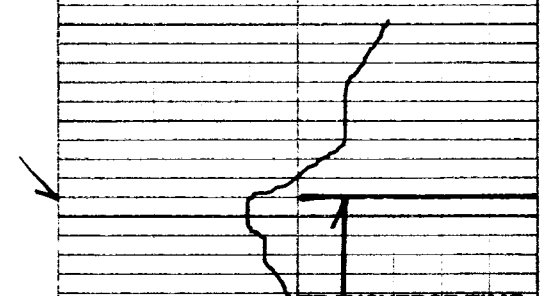
TRANSVERSE TIME

100

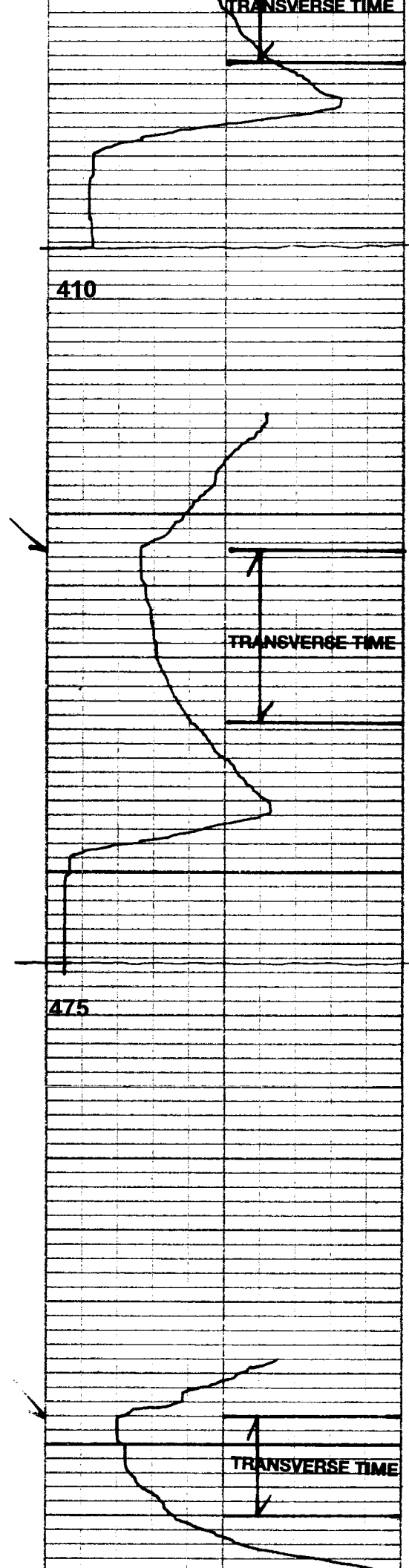
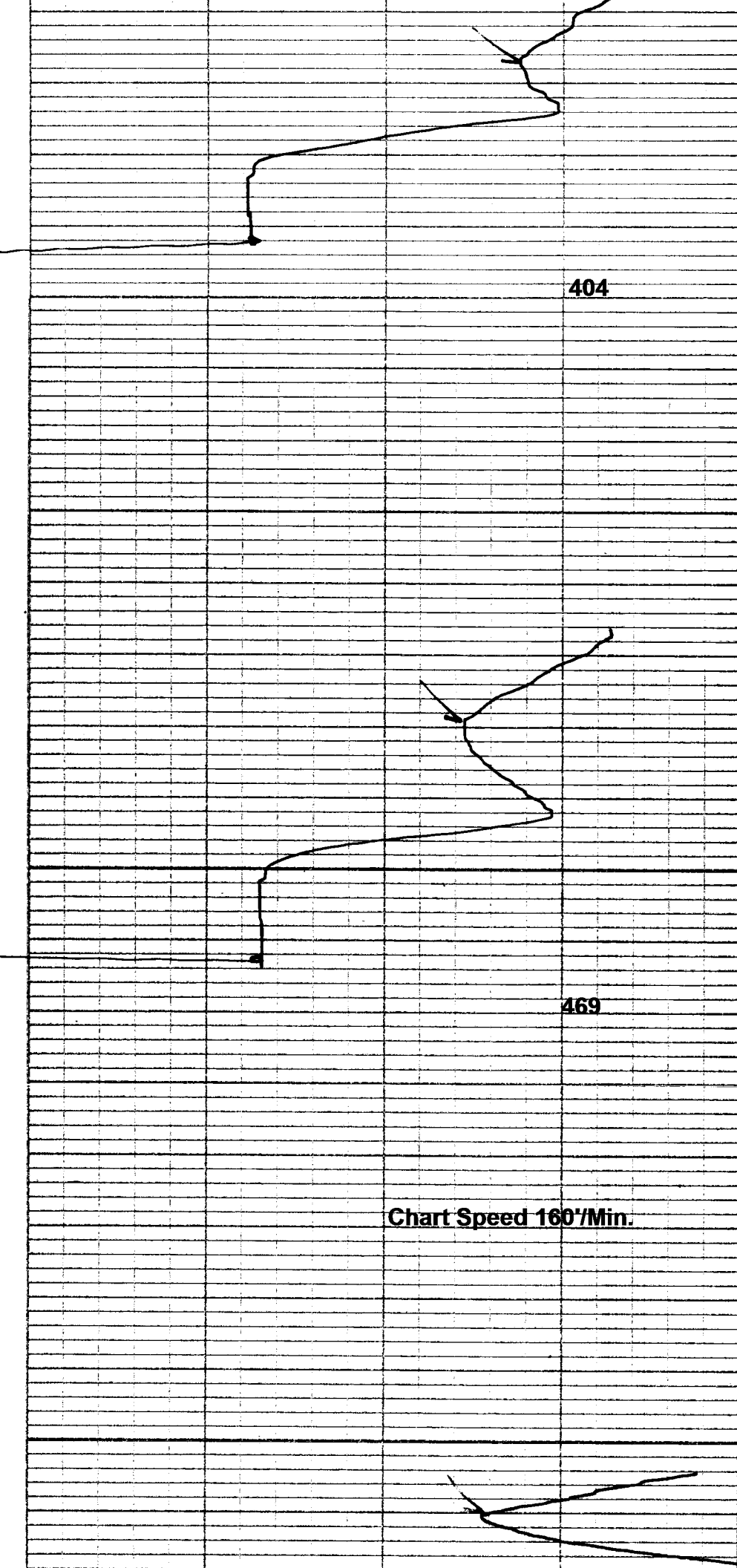


TRANSVERSE TIME

365



TRANSVERSE TIME



545

551

200

← 2 3/8" Tubing

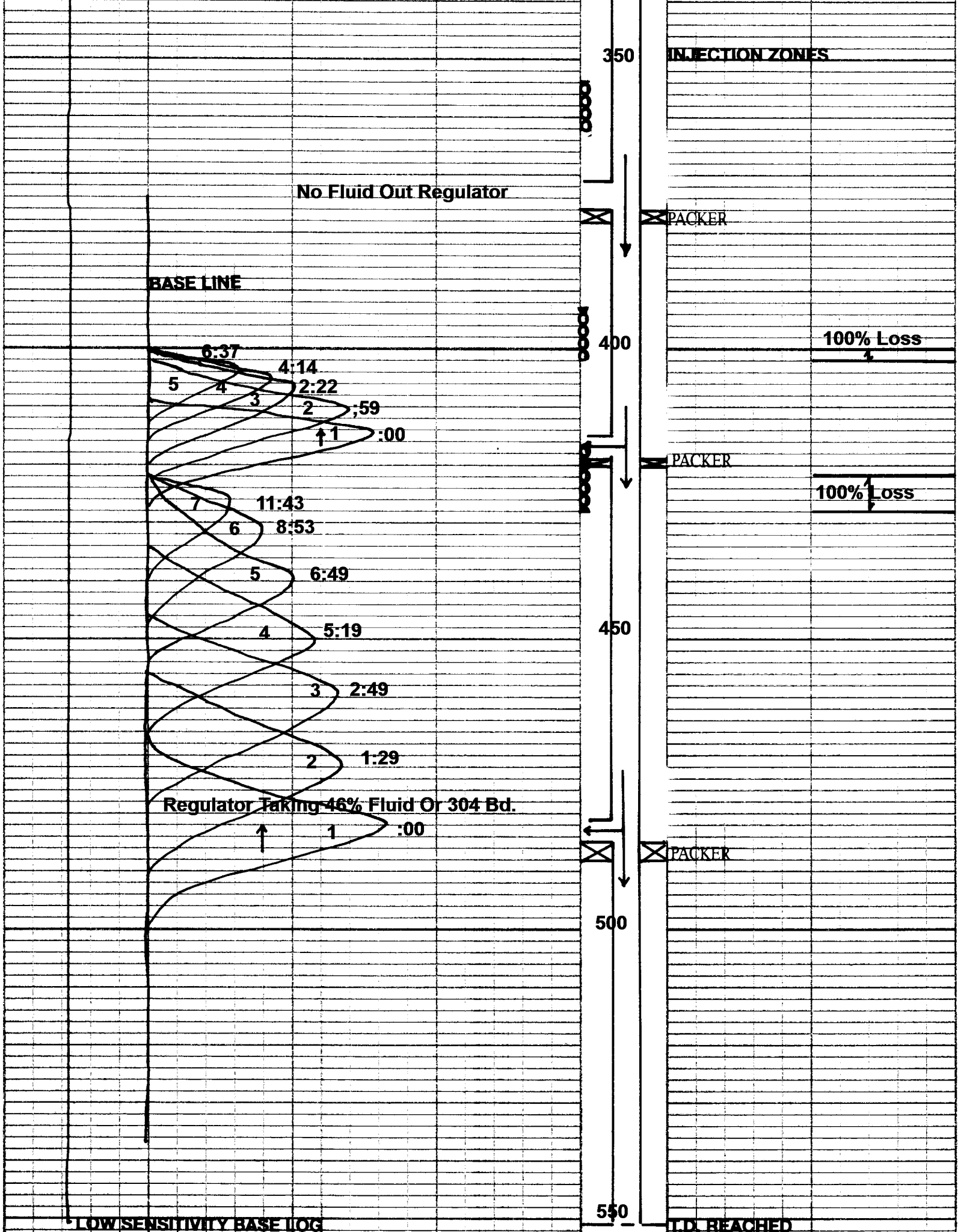
250

← 5 1/2" Casing

300

⊗ PACKER

TRACER RUNS SHOWING FLUID MOVEMENT



350

INJECTION ZONES

No Fluid Out Regulator

PACKER

BASE LINE

400

100% Loss

6:37
5 4 3 2 1
4:14 2:22 2:59
↑ 1 :00

PACKER

100% Loss

11:43 8:53
6 5 4
6:49 5:19

450

3 2
2:49 1:29

Regulator Taking 46% Fluid Or 304 Bd.

PACKER

500

↑ 1 :00

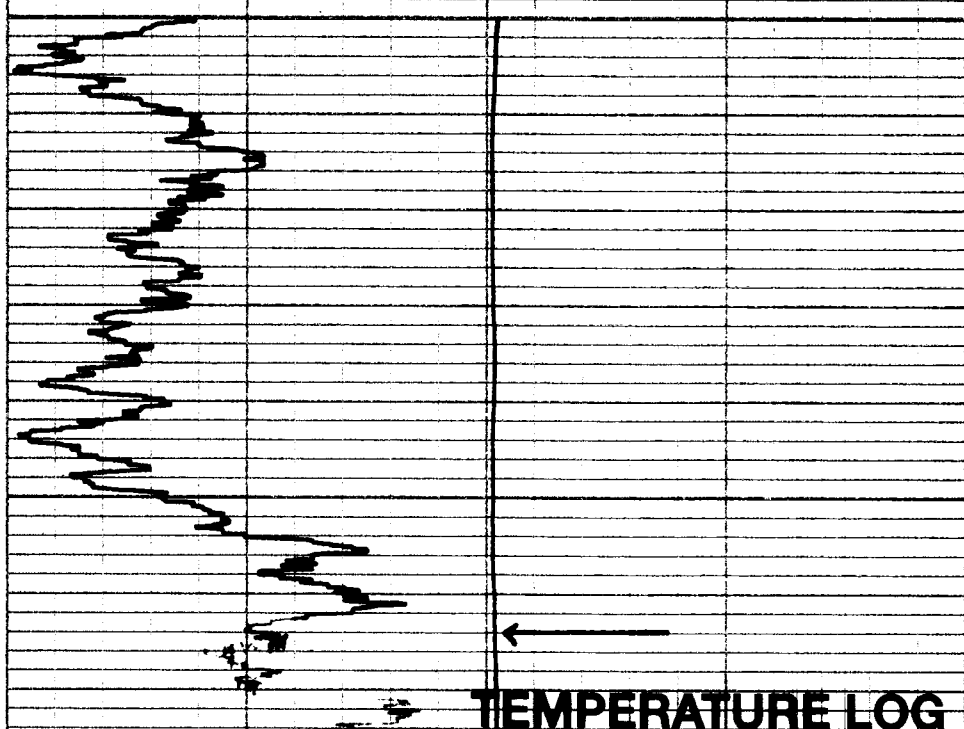
LOW SENSITIVITY BASE LOG

550

TD REACHED

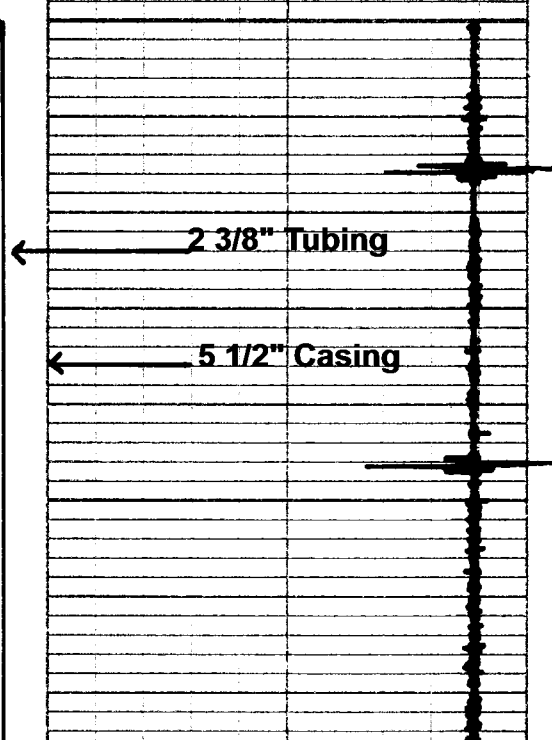
33% Fluid Or 218 Bd. Moving Below T.D.Reached

TEMPERATURE INCREASES →



200

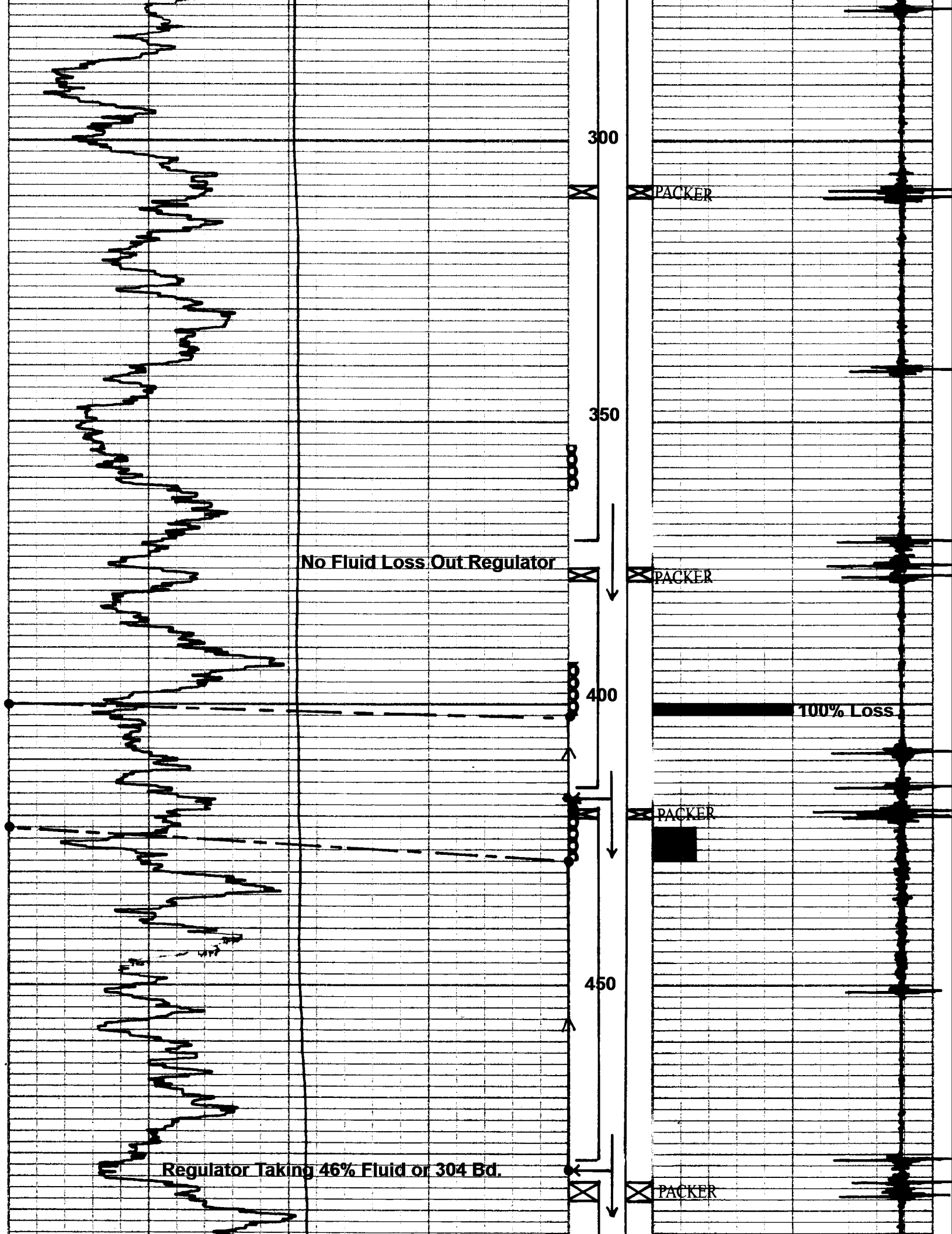
250



2 3/8" Tubing

5 1/2" Casing

TEMPERATURE LOG



300

PACKER

350

No Fluid Loss Out Regulator

PACKER

400

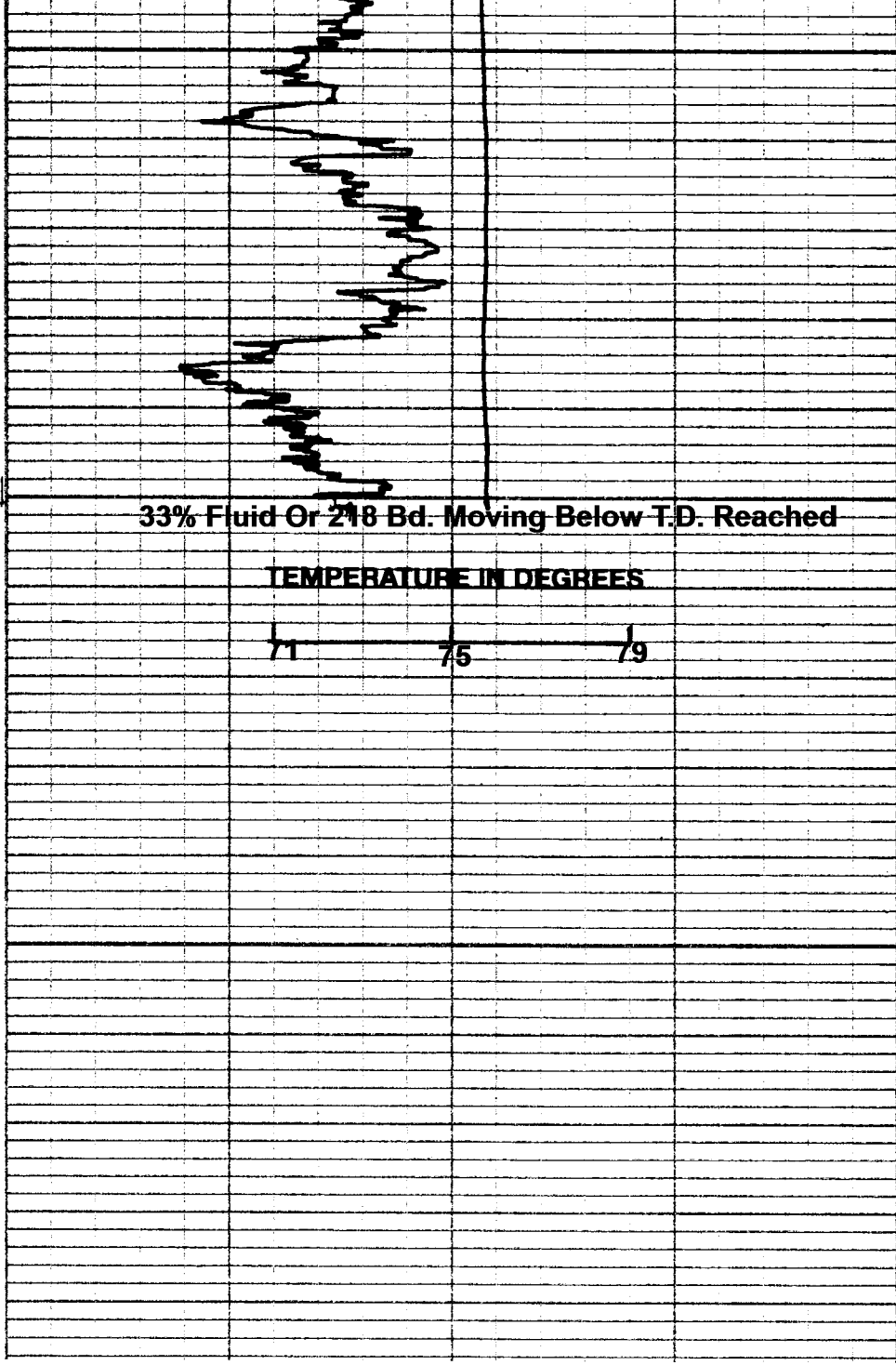
100% Loss

PACKER

450

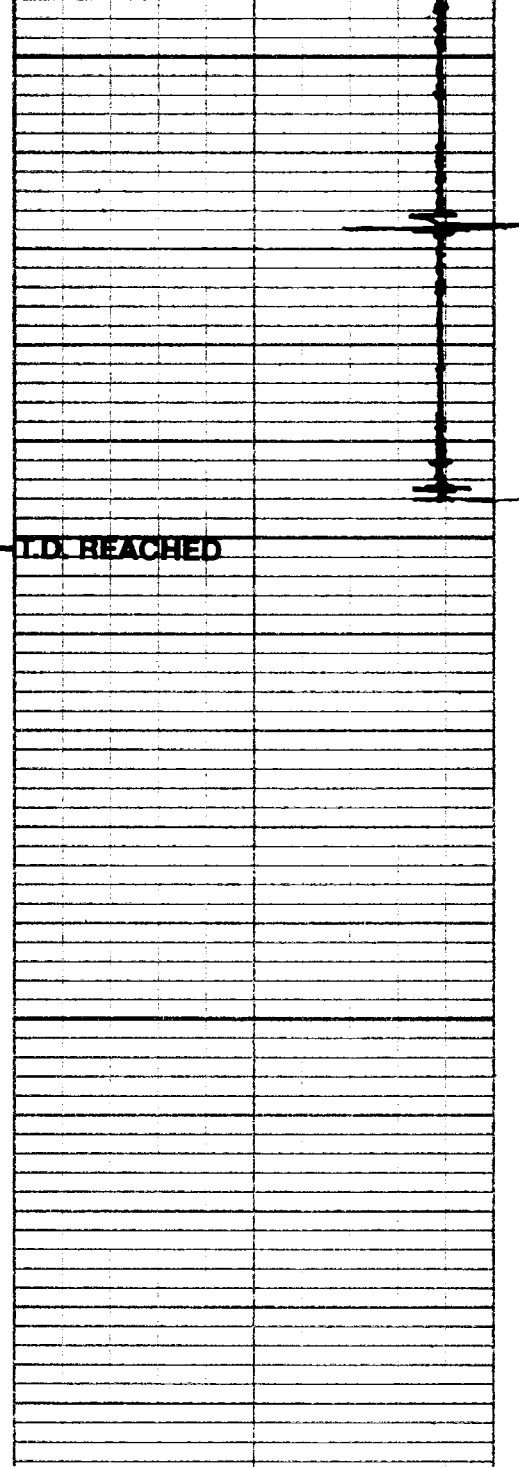
Regulator Taking 46% Fluid or 304 Bd.

PACKER

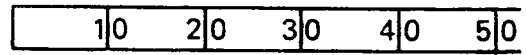


500

550



PERCENT OF INPUT



PERCENT PER FOOT

———— GAMMA LOG

----- R/A FOLLOW UP TRACER

→ RADIO ACTIVITY INCREASES

⋮ PERFORATIONS FROM CUSTOMERS RECORDS

⊥ SLOTS

~ CHANNEL

STEPHENS CO., OK.

10/19/2011

