

ASSOCIATED WIRELINE SERVICE, Inc.

580-229-0731 • Box 906 • Healdton, Oklahoma 73438

FILING NO. _____

COMPANY _____

WELL _____

FIELD _____

COUNTY CANADIAN

STATE OK

LOCATION: _____

TYPE SERVICES:
INJECTION PROFILE
W/TEMP.

SEC 20 TWP 13N RGE 8W

PERMANENT DATUM GL ELEV 1361

ELEV. K.B. 1373

LOG MEASURED FROM KB 12 FT ABOVE PERM. DATUM

D.F. _____
G.L. 1361

DRILLING MEASURED FROM KB

DATE 6/9/2011

RUN NO. ONE INJECTION PROFILE W/TEMP.

TYPE LOG DEPTH-DRILLER 8181 RATE 294 BD

DEPTH-LOGGED 8133 FLUID WATER

BOTTOM LOGGED INTERVAL 8133 ISOTOPE I-131

TOP LOGGED INTERVAL 7900 8 DAY HALF LIFE

TYPE FLUID IN HOLE WATER

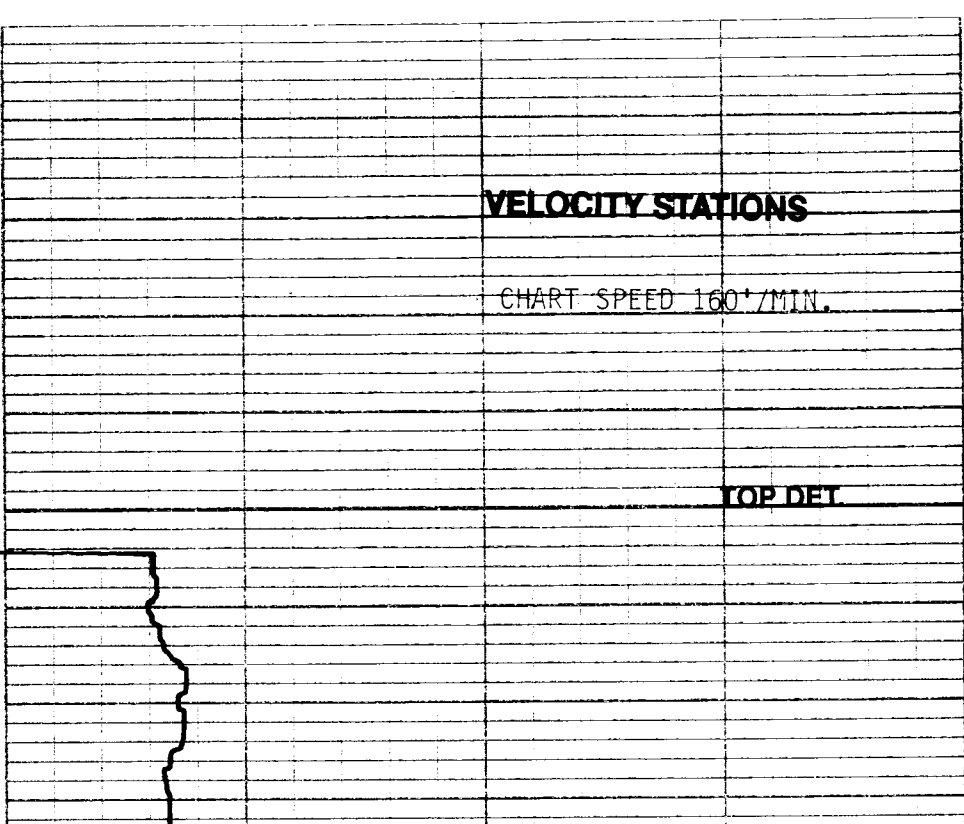
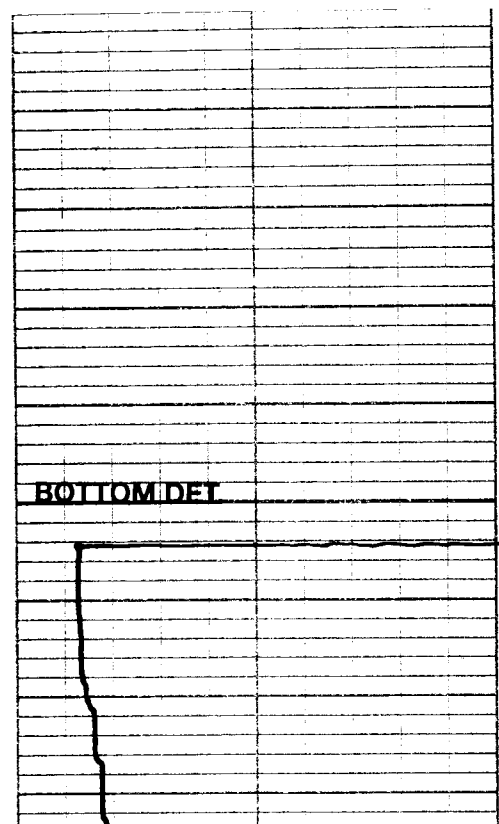
CASING AND TUBING RECORD

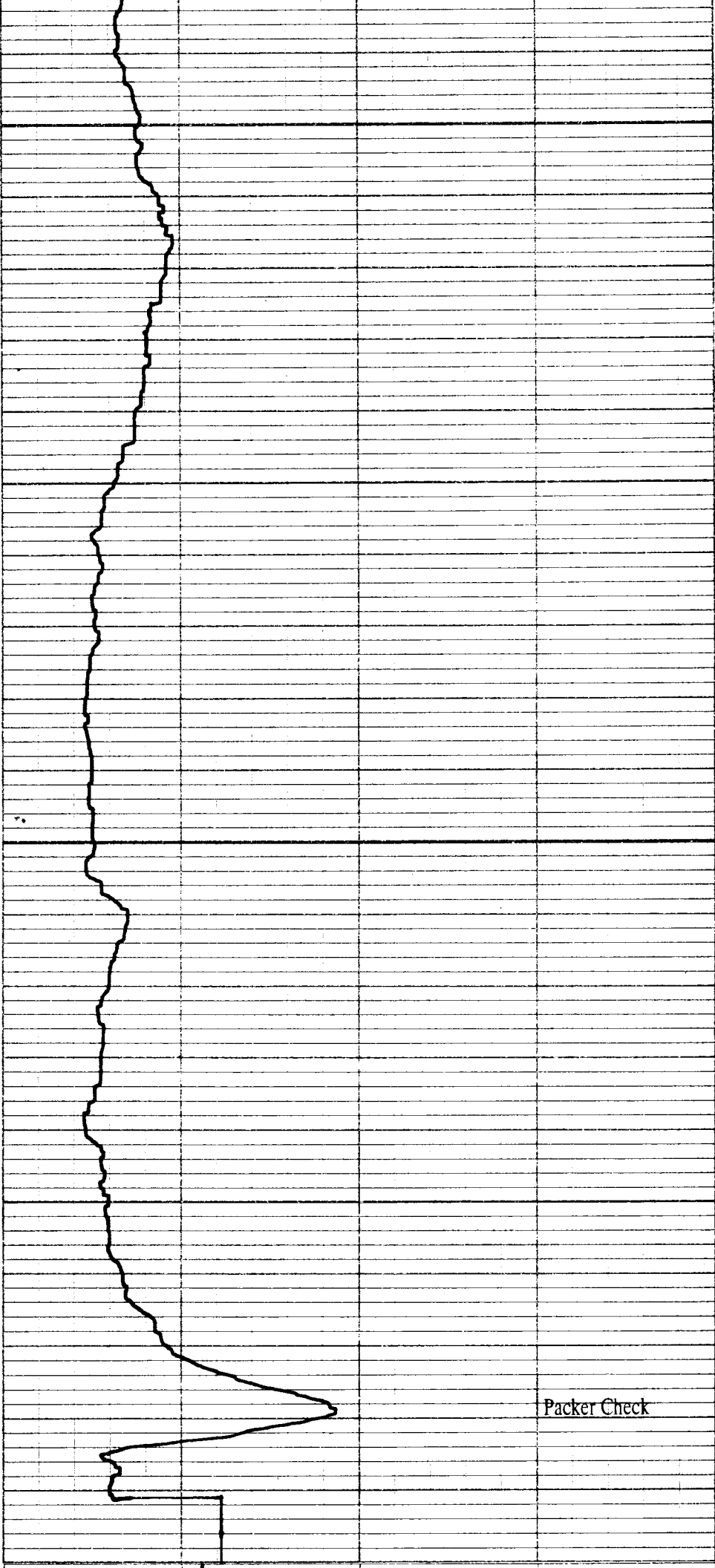
LEVEL	SIZE	WGT	TYPE	FROM	TO
FULL	5 1/2"	17#		0	8249
RECORDING SPEED	25'/MIN		TBG.	0	8042
TOOL SIZE	1 3/8"				
RECORDED BY	STEARNS				
WITNESSED BY	MR. PUGH				

PERFORATIONS: 8071-88

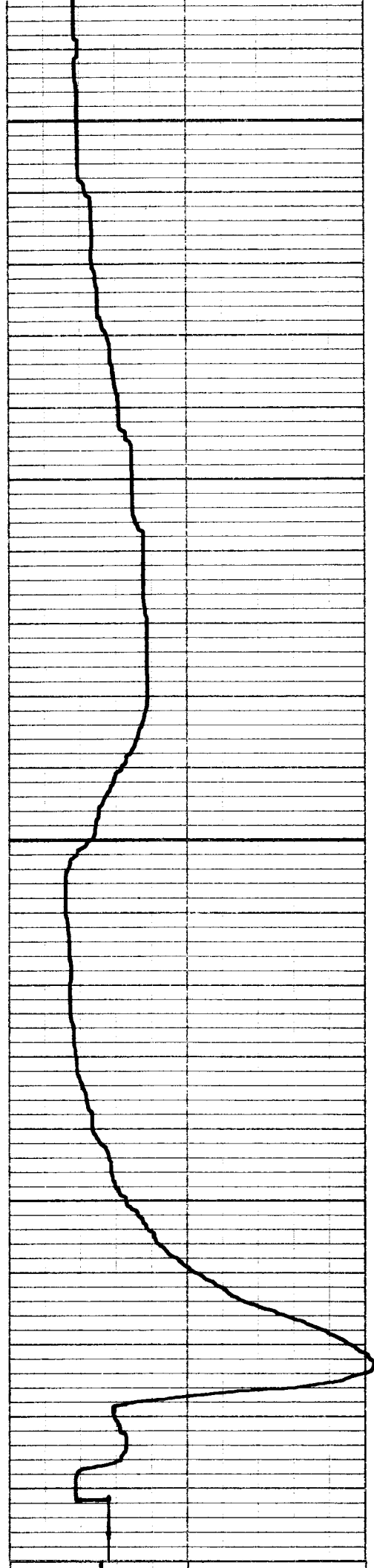
REMARKS:

SEE NOTE BELOW.



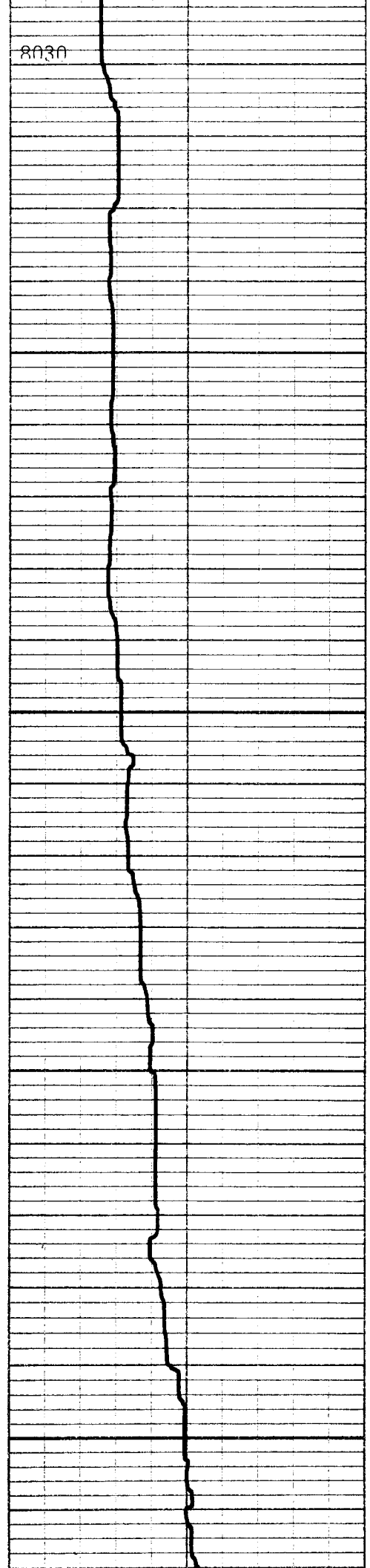
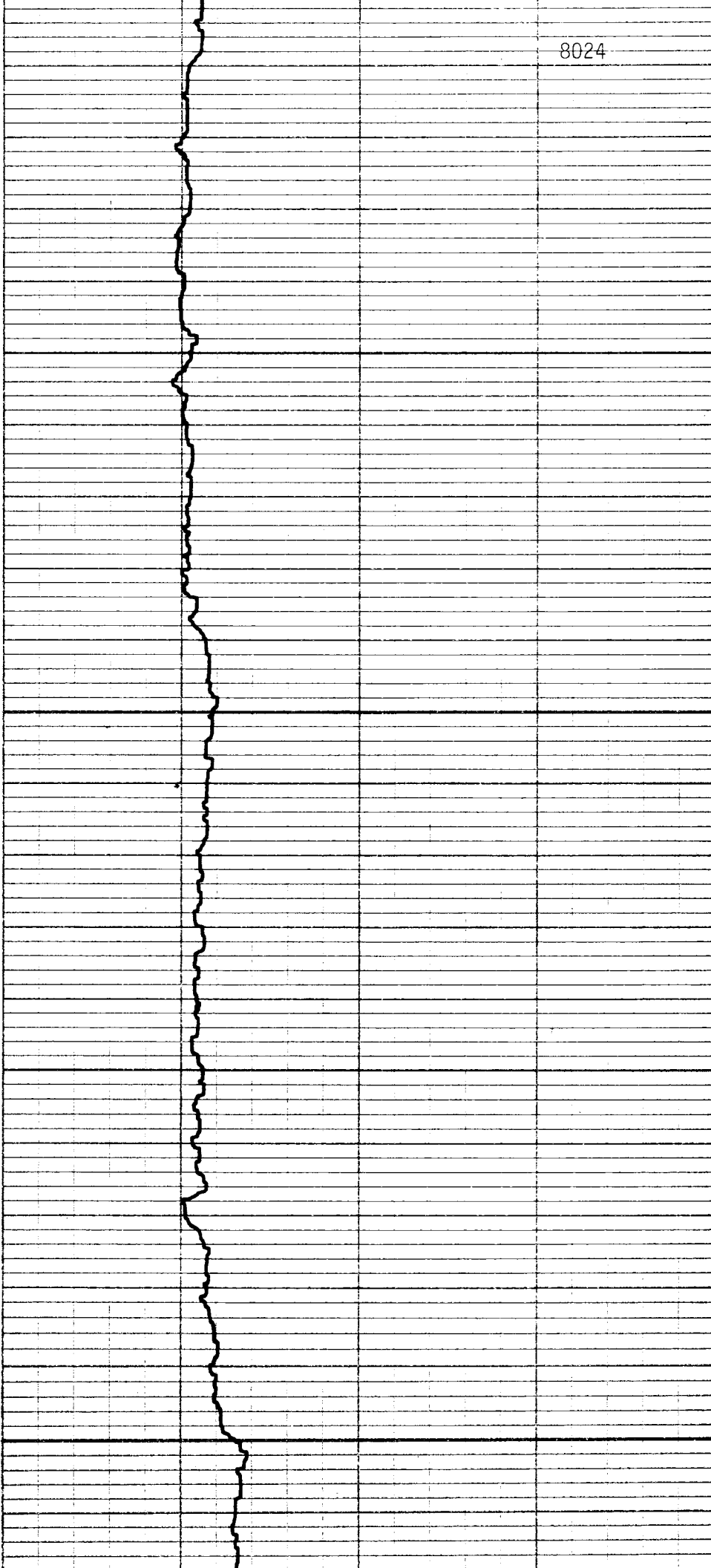


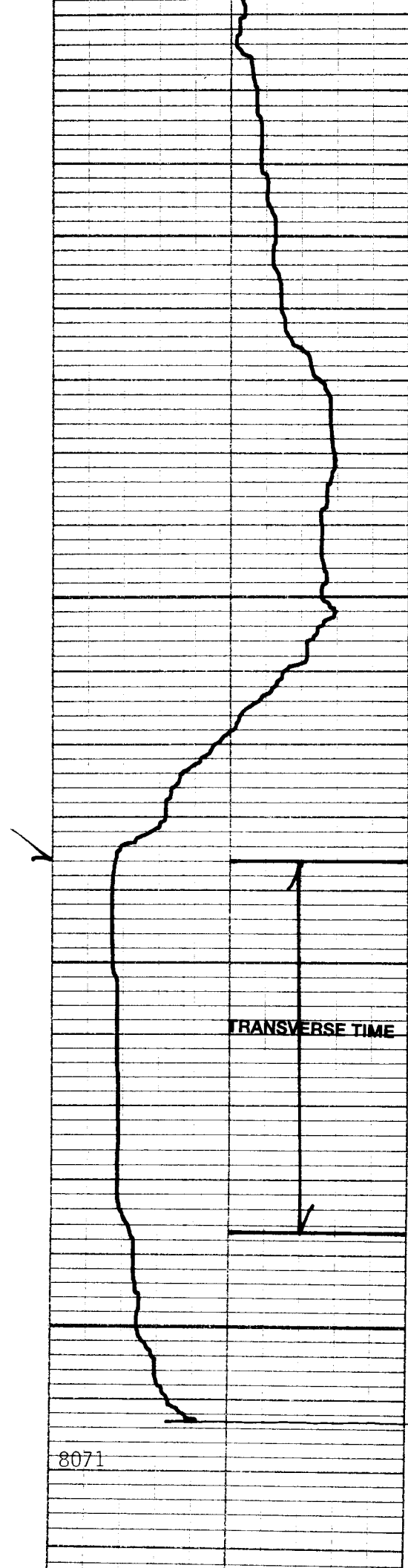
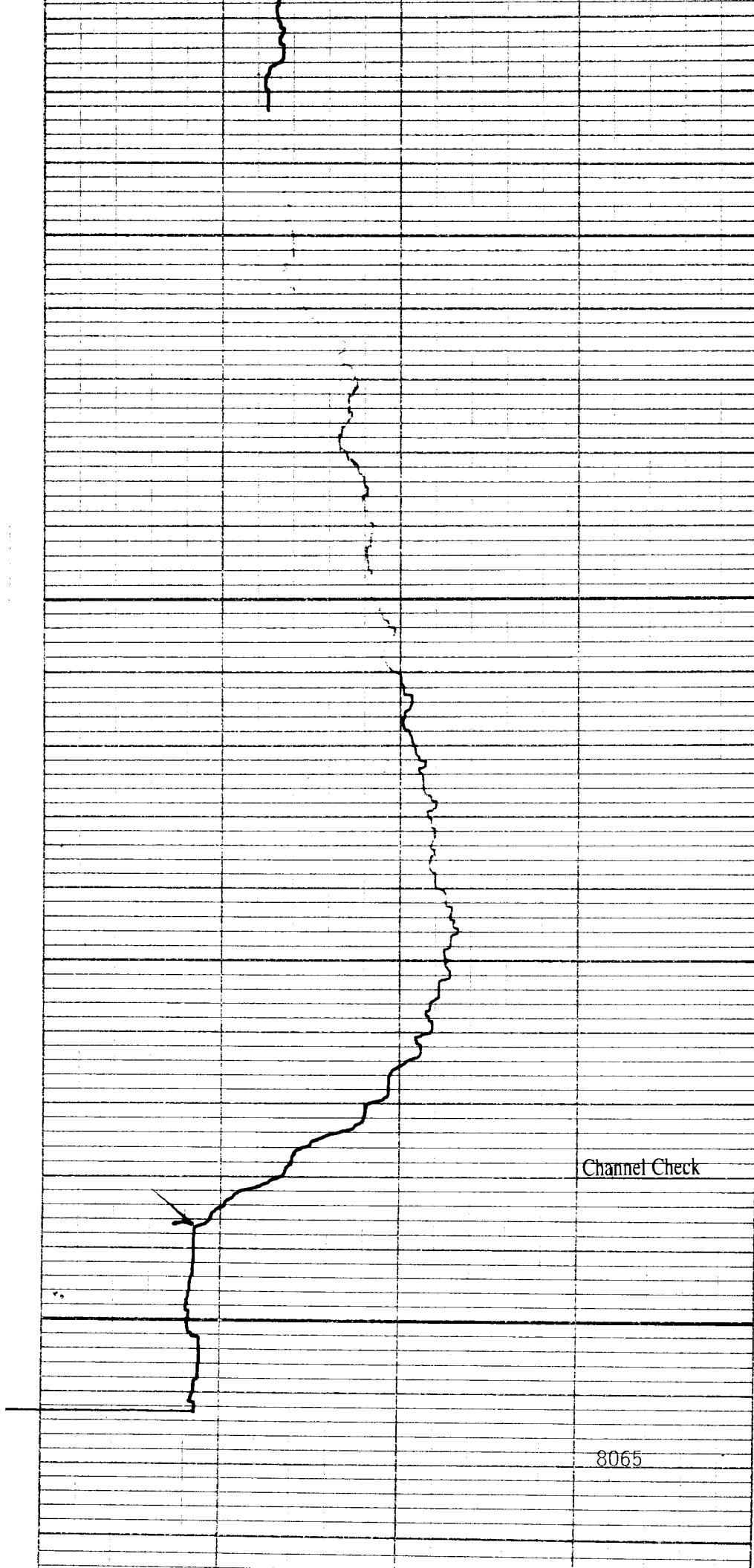
Packer Check

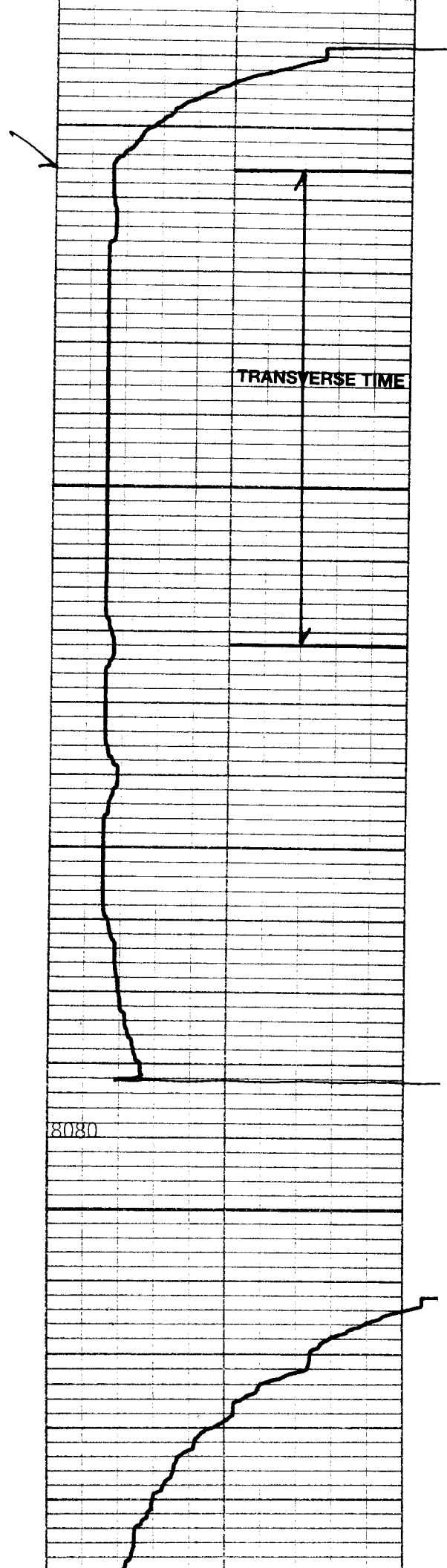
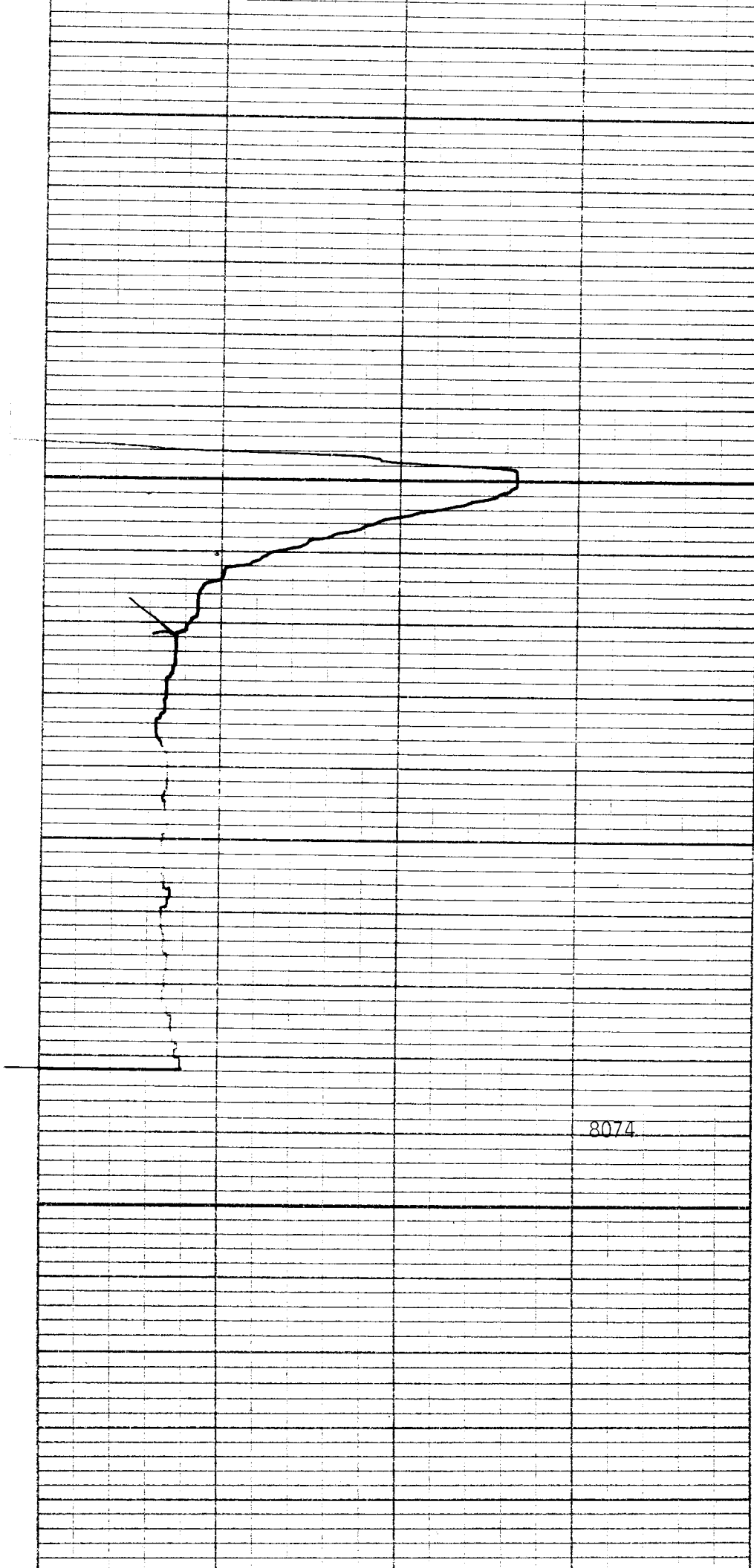


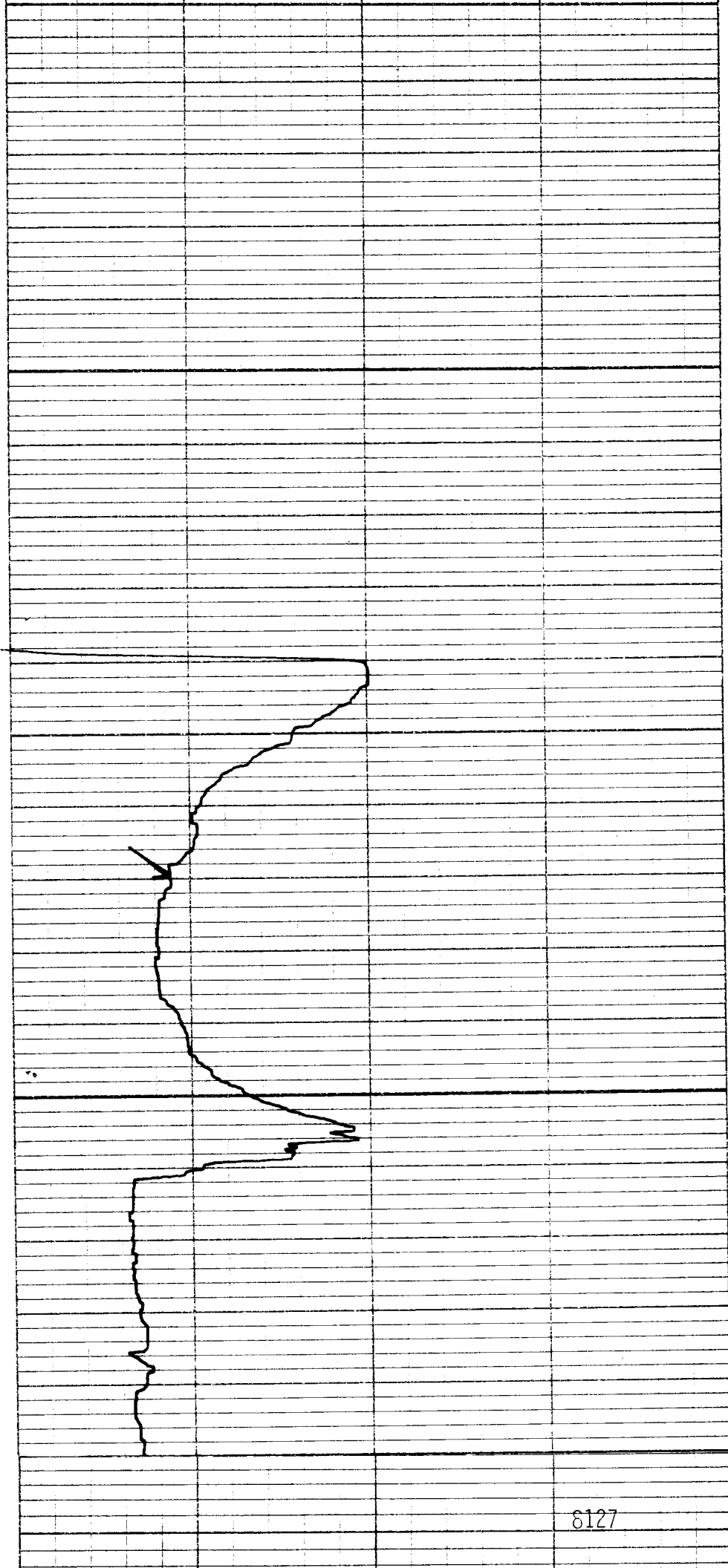
8024

8030

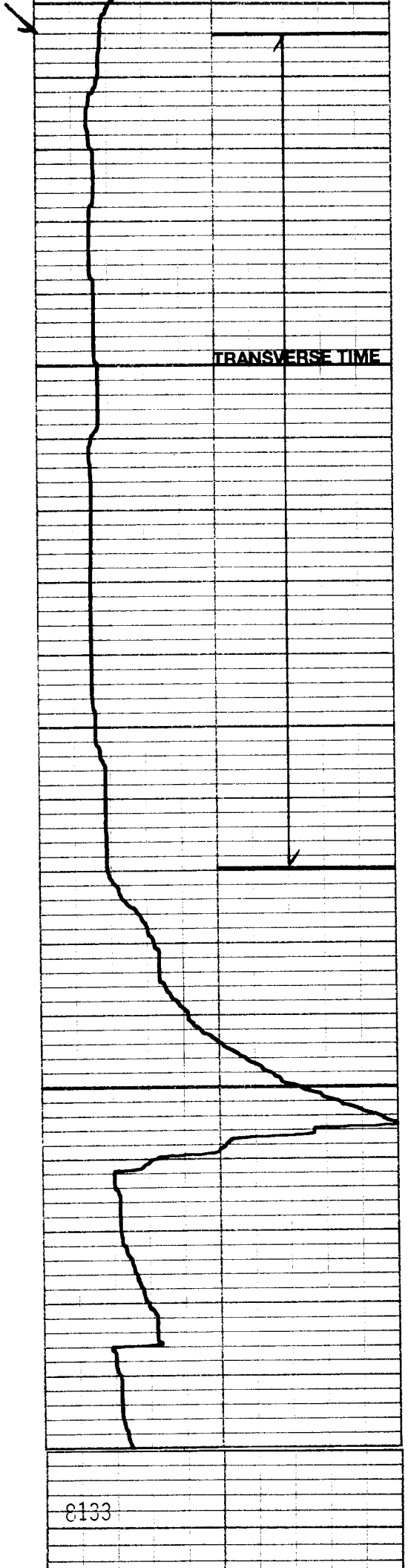






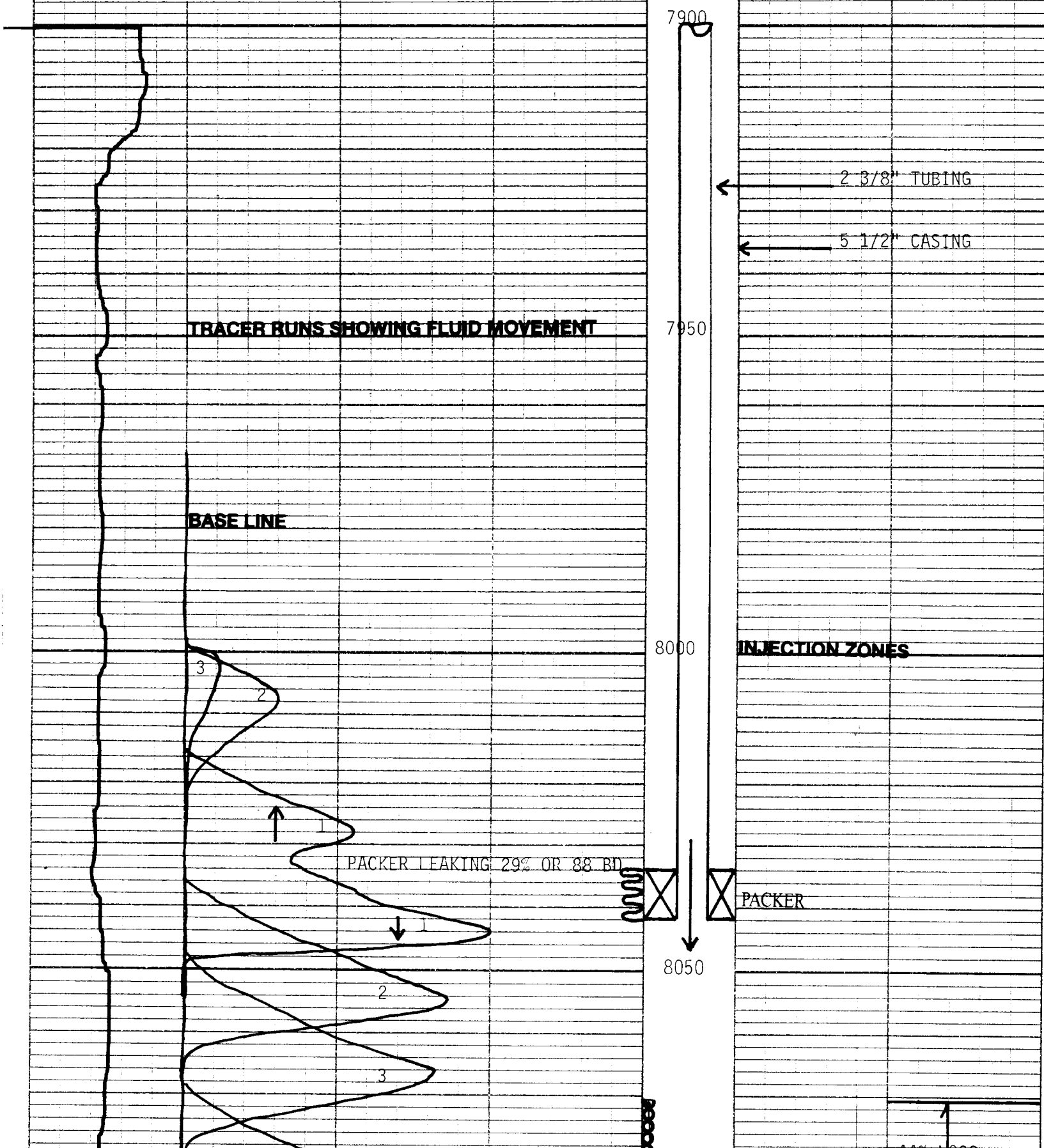


8127



TRANSVERSE TIME

8133



44% LOSS



8100

4

5

6

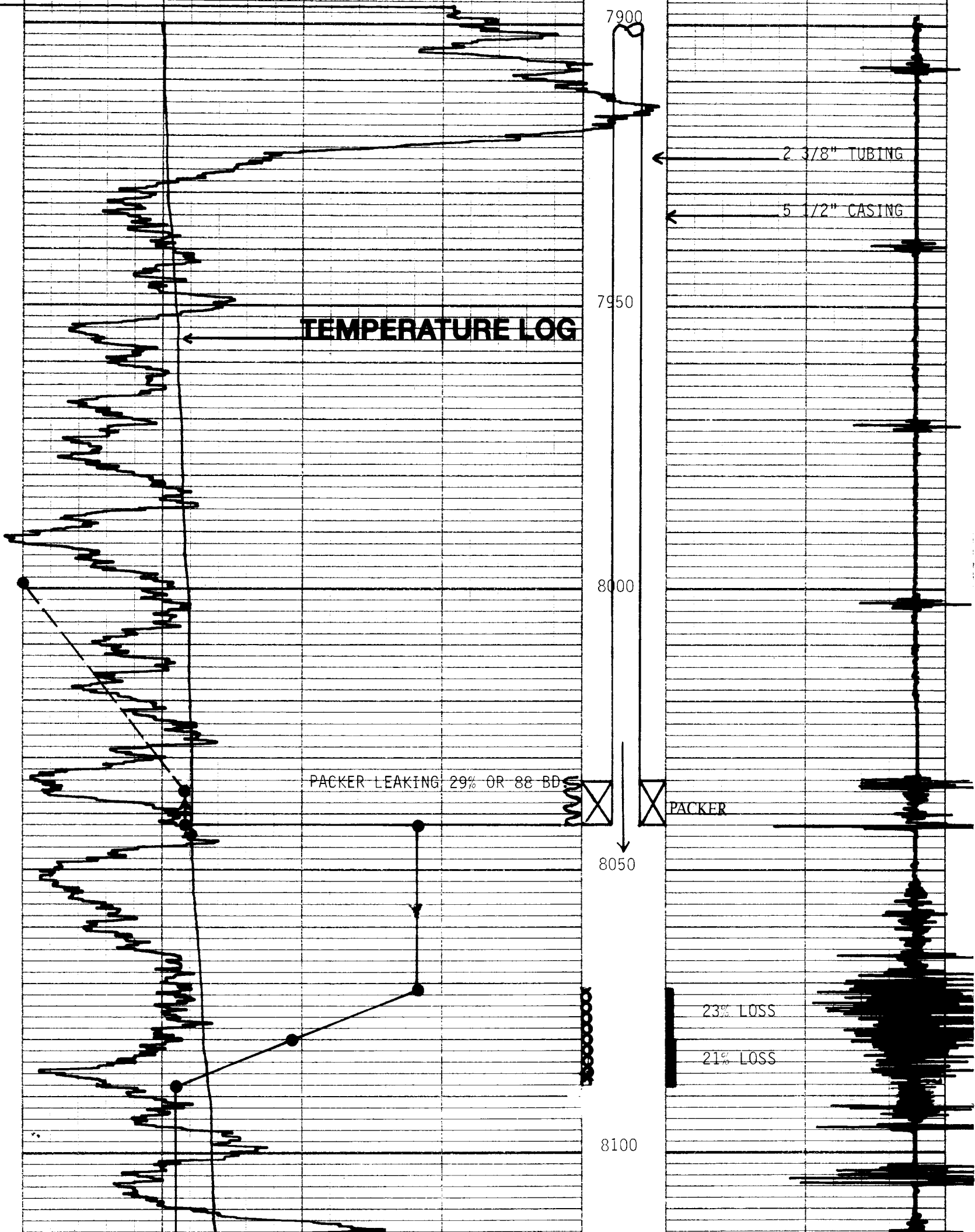
7

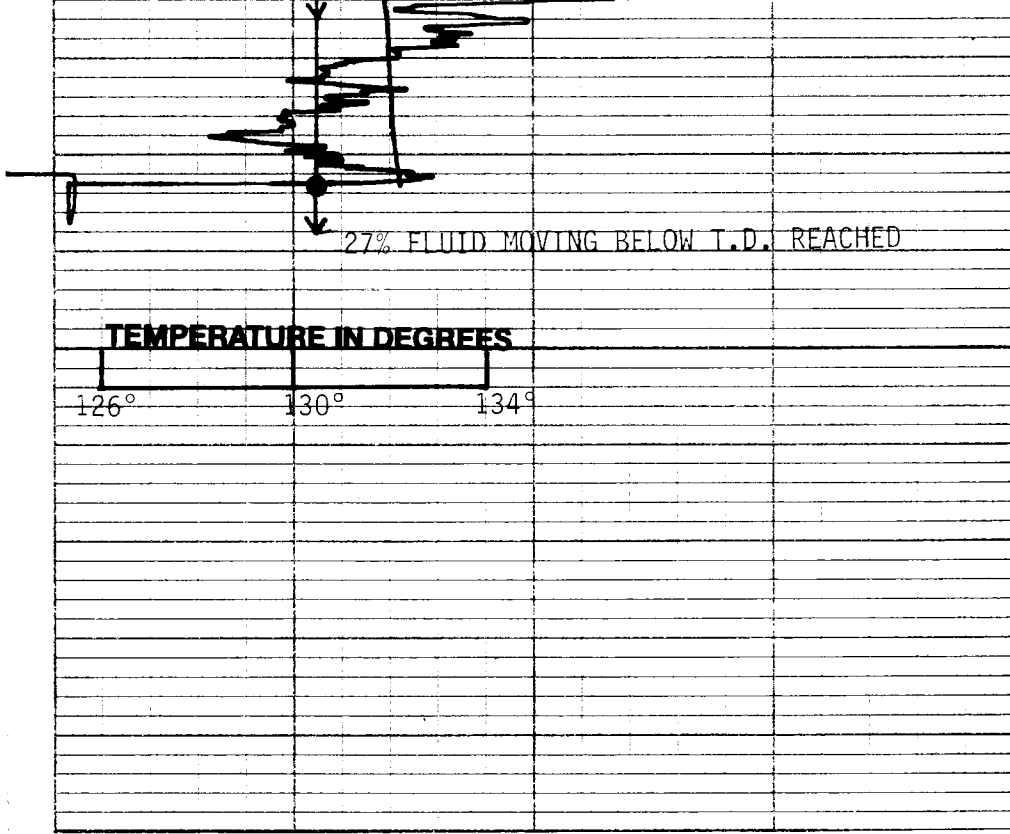
LOW SENSITIVITY BASE LOG

T.D. REACHED

27% FLUID MOVING BELOW T.D. REACHED

TEMPERATURE INCREASES →





T.D. REACHED

27% FLUID MOVING BELOW T.D. REACHED

TEMPERATURE IN DEGREES

126° 130° 134°

25 50 75 100

PERCENT OF INPUT

10 20 30 40 50

PERCENT PER FOOT

———— GAMMA LOG

----- R/A FOLLOW UP TRACER

→ RADIO ACTIVITY INCREASES

⋮ PERFORATIONS FROM CUSTOMERS RECORDS

┆ SLOTS

~ CHANNEL

CANADIAN CO., OK.
6/9/2011

Sta. No.	Rate Bbbs. Day	Depth. Interval	Capacity of Interval Bbbs.	Injection Volume to Fill Interval Bbbs.	Percent of Fluid Going Below Base of Interval	Percent of Fluid Lost in Interval	Press P.S.I.
		8030 PACKER LEAK 29% OR 88 BD MOVING ABOVE PACKER					
		FLUID MOVING DOWN CASING 71% OR 208 BD					
1	294	8030-8071	0.9512	0.9512	71	0	350
2	"	8071-8080	0.2088	0.9078	48	23	"
3	"	8080-8088	0.1856	0.8838	27	21	"
4	"	8088-8133	1.0440	1.0440	27	0	"
5	"	MOVING BELOW T.D. REACHED -----			27		"

NOTE:

SURVEY INDICATES PACKER LEAK @ 8030'. 29% OR 88 BD. MOVING ABOVE PACKER. NO OTHER LEAKS OR CHANNELS INDICATED UNDER EXISTING INJECTION CONDITIONS.

